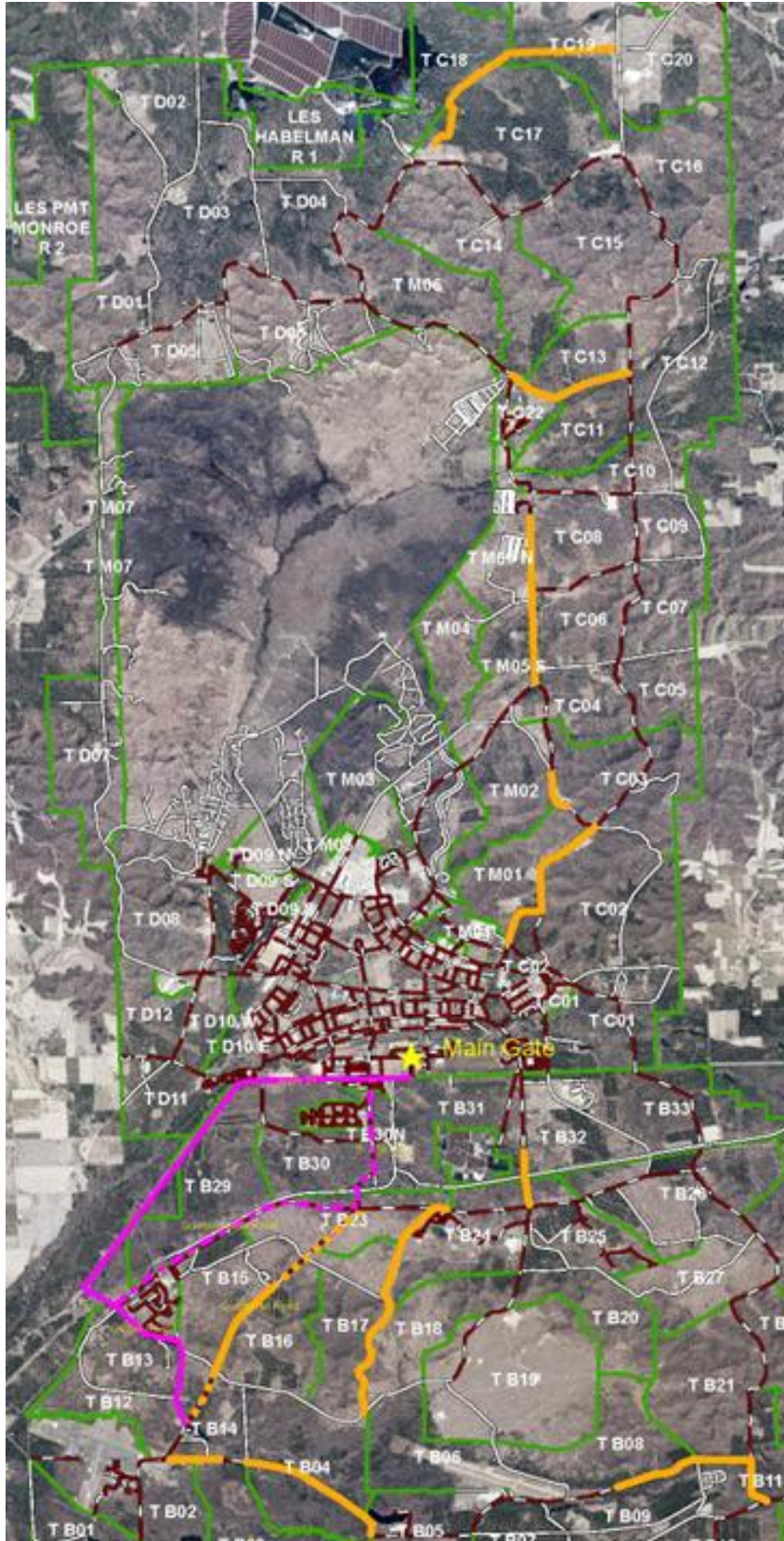


## Attention Users: Periodic roadway closures



Over the next few months, clearing along travel corridors will be taking place to remove vegetation for the upcoming training season. These efforts are routine maintenance activities for roadway safety requirements.

The attached map shows areas of work highlighted in Orange, including Quarry Hill Road. The alternate route for Quarry Hill Road while closed for corridor clearing is highlighted in Magenta (secondary route in dashed Magenta). Please take note of the routes, as the roadway will be closed while the crew works through the area without additional notifications. All other areas being addressed are not considered main access routes and will also be closed as needed to perform the clearing operations without further notification. They are highlighted orange for your reference. Barricades will be placed on the roadway, do NOT drive past the barricades, and find an alternate travel route when barricades are encountered. We appreciate your support and patience.