

# GUIDE TO WISCONSIN TROUT FISHING REGULATIONS 2024-2025



Wisconsin Department of Natural Resources  
Bureau of Fisheries Management



**as 1-2-3**

- 1** Use the index map (back cover) to find the area you would like to fish.
- 2** Find the county list and locate the water that you would like to fish.
- 3** Follow the Trout Regulations Key (p. 9) or the specific regulation for that water. If the water is not listed, use the “all waters not listed” regulation category.

***On the cover:** Wisconsin Trout Unlimited conducts an annual trout stamp contest with the winning art displayed on the cover of this publication. This year's winning trout art is a brown trout from artist Robert Leum of Holmen, Wisconsin.*

### **Free Fishing Weekends— Jan. 20-21, 2024, June 1-2, 2024 and Jan. 18-19, 2025**

Every year, the first consecutive Saturday and Sunday in June and the third consecutive Saturday and Sunday in January are designated as Free Fishing Weekend throughout the state of Wisconsin. Residents and nonresidents of all ages can fish without a fishing license (and trout stamps) over these two days. However, all other fishing regulations (length limits, bag limits, seasons, etc.) apply. Please note: You can only fish for trout where the trout season is open.

**Purchase your license online at:**

**GoWild.WI.Gov**

*Find trout and trout fishing information online at:  
[dnr.wi.gov/topic/fishing/trout](http://dnr.wi.gov/topic/fishing/trout)*

\*\* This pamphlet is an interpretive summary of Wisconsin's fishing laws and regulations. For complete fishing laws and regulations, consult the Wisconsin State Statutes Chapter 29 or the Administrative Code of the Department of Natural Resources. Consult the legislative website - <http://docs.legis.wisconsin.gov/> - for more information.

The Wisconsin Department of Natural Resources provides equal opportunity in its employment, programs, services, and functions under an Affirmative Action Plan. If you have any questions, please write to Equal Opportunity Office, Department of the Interior, Washington, D.C. 20240. The Department of Natural Resources is committed to serving people with disabilities. If you need this information in an alternative format, please call (608) 267-7498.



# YOUR GUIDE TO REGULATIONS AND BETTER TROUT FISHING

This guide is specific to inland (including streams that flow into the Great Lakes) trout and salmon fishing. For general fishing rules, which also apply to trout and salmon fishing, refer to the *Guide to Wisconsin Hook and Line Fishing Regulations, 2024-2025* (Publication FH-301). This pamphlet is a summary of Wisconsin's trout and salmon fishing laws and regulations. For complete fishing laws and regulations, consult the Wisconsin Administrative Code of the Department of Natural Resources ([http://docs.legis.wisconsin.gov/code/admin\\_code/nr/001/20](http://docs.legis.wisconsin.gov/code/admin_code/nr/001/20)).

## TABLE OF CONTENTS

Trout And Salmon Fishing Restrictions.....	1
Early Catch And Release Season.....	2
Lake Michigan Streams.....	2
Lake Superior Streams .....	3
Specific Waters Listed By County .....	4
Trout Regulations Key And Maps.....	9
Trout Fishing Made Easy.....	31
Public Or Private? Am I Trespassing?.....	32
Trout Regulations And Opportunities User Tool (TROUT).....	32
Identifying Wisconsin's Trout And Salmon .....	33

### **TROUT AND SALMON FISHING RESTRICTIONS** - *Please remember it is illegal...*

- To fish without a Wisconsin fishing license or stamp as required. You must have an inland trout stamp if you need a fishing license and intend to fish for trout or salmon in inland waters, including streams flowing into Lake Superior. You need a Great Lakes salmon and trout stamp to fish for trout and salmon in streams that flow into Green Bay and Lake Michigan from their mouths up to the first dam or lake. Note: A Great Lakes salmon and trout is required to fish Lake Superior and Lake Michigan, proper. A 2-day resident inland lake trout license may be purchased to fish for lake trout (*Salvelinus namaycush*) only in inland lakes (no general fishing license or stamp is required).
- To fish for any species of fish in trout streams when the trout season is closed except that rough fish may be taken by hand.
- To possess a fish that is below the minimum length limit or above the maximum length limit established for the waters being fished.
- To take, catch, kill or fish for any variety of fish in excess of the daily bag limit or total daily bag limit (see definitions below).
- To possess or fish for more than the daily bag limit of fish while you're fishing or while you're on the water, shore or bank of the water, or on the ice, regardless of the number of days fished.
- To possess more than the possession limit at any time. The possession limit on trout in inland waters is 10.
- To move live fish away from a water, except minnows that were purchased from a licensed bait dealer under certain conditions. Check the DNR website for more information - [www.dnr.wi.gov/topic/fishing](http://www.dnr.wi.gov/topic/fishing).
- To use or release minnows on rehabilitated trout lakes that are identified with posted signs.
- To possess any live bait or any other baits, hooks or lures other than artificial lures while on the waters, banks or shores of waters where only the use of artificial lures is allowed.
- To remove fish eggs for bait from under-sized fish or fish caught during the closed season for that species. Fish eggs may be removed from legal-sized fish and the fish returned to the water, but the fish would count toward the angler's daily bag limit. Live fish eggs cannot be transported away from the water.
- To remove insect larvae from any trout stream or spring hole tributary to a trout stream for use or sale as bait. However, a licensed angler may take insect larvae or nymphs from trout streams by hand during the open trout season for their immediate personal use as bait in the stream from which taken. When done fishing, all larvae or nymphs must be returned to the stream prior to leaving the stream from which taken. By hand means no use of small seines or nets or other devices.

**Early Catch And Release Season** for trout - First Saturday in January at 5 a.m. through the Friday preceding the First Saturday in May at midnight on the waters listed in 1 through 19 below:

**Jan. 6, 2024 through May 3, 2024**

- ✓ All trout caught during this time must be immediately released (The daily bag limit is 0).
- ✓ Only artificial lures may be used.

**Note: The early season does not apply to spring ponds, ponds, lakes, Lake Michigan tributaries, major Green Bay tributaries, all other tributary streams, rivers and ditches to Green Bay upstream to the first dam or lake or streams flowing into Lake Superior and their tributaries upstream to the first impassable barrier.**

### Early Season Streams

1. All streams in Adams, Barron, Buffalo, Burnett, Chippewa, Clark, Columbia, Crawford, Dane, Dodge, Dunn, Eau Claire, Fond du Lac, Grant, Green, Green Lake, Iowa, Jackson, Jefferson, Juneau, Kenosha, La Crosse, Lafayette, Milwaukee, Monroe, Ozaukee, Pepin, Pierce, Polk, Price, Racine, Richland, Rock, Rusk, St. Croix, Sauk, Sawyer, Sheboygan, Taylor, Trempealeau, Vernon, Walworth, Washburn, Washington, Waukesha and Wood counties are open. (Note: all streams in Brown Calumet, Door, Kewaunee, Manitowoc, Menominee, Outagamie and Winnebago counties are closed)
2. Ashland County—All streams, except Lake Superior streams from their mouths upstream to the first impassable barrier.
3. Bayfield County—All streams, except Lake Superior streams from their mouths upstream to the first impassable barrier.
4. Douglas County—All streams, except Lake Superior streams from their mouths upstream to the first impassable barrier.
5. Florence County—Pine River and Popple River.
6. Forest County—Peshtigo River downstream from U.S. Highway 8, Pine River downstream from STH 55, Popple River and Rat River downstream from Scattered Rice lake.
7. Iron County—All streams, except Lake Superior streams from their mouths upstream to the first impassable barrier.
8. Langlade County—Wolf River and main stem of Plover River upstream of STH 153, excluding tributaries and off-channel springs.
9. Lincoln County—All streams west of STH 51 and Prairie River downstream from CTH J.
10. Marathon County—Black Creek (mouth at T27N R7E S4), Black Creek (T30N, R3E), Grass Creek, McGinnes Creek, Fourmile Creek, Noisy Creek and main stem of the Plover River upstream of STH 153, excluding tributaries and off-channel springs.
11. Marinette County—North Branch Pemebonwon River downstream from STH 141, Peshtigo River upstream from CTH C, Pike River between CTH V and CTH K and Rat River.
12. Marquette County—Chaffee Creek downstream from CTH B, Klawitter Creek, Lawrence Creek, Lunch Creek, Mecan River upstream from STH 22, Neenah Creek, O’Keefe Creek, Wedde Creek and Westfield Creek.
13. Oconto County—North Branch Oconto River downstream from STH 64 and South Branch Oconto River downstream from CTH AA.
14. Oneida County—All streams west of STH 51 and Bearskin Creek.
15. Portage county—Ditches 1 through 6 downstream from Townline Road and the Waupaca (Tomorrow) River from the Amherst Dam (Portage County) downstream to STH 54 (Waupaca County).
16. Shawano County—Middle Branch Embarrass River from Homme Dam to STH 29, North Branch Embarrass River from Tilleda Dam downstream to Leopold Dam and Red River downstream from lower Red Lake Dam.
17. Vilas County—Mishonagon Creek.
18. Waupaca County—North Branch Little Wolf River from CTH P to CTH J, South Branch Little Wolf River and the Waupaca (Tomorrow) River from STH 54 (Waupaca County) upstream to the Amherst Dam (Portage County).
19. Washara County—Carter Creek, Leola Ditch, Mecan River downstream from 11<sup>th</sup> Road, Pine River downstream from CTH K to Poy Sippi Pond, Roche-a-Cri Creek, Willow Creek from Blackhawk Road to 29<sup>th</sup> Lane and White River from STH 21 to lower White River Millpond.

**General Open Season for trout and salmon in inland streams, springs and spring ponds** - First Saturday in May at 5 a.m. through Oct. 15 except as listed in the *Specific Waters Listed by County* section.

**May 4, 2024 through Oct. 15, 2024**

**General Open Season for trout and salmon in inland lakes and ponds** - First Saturday in May at 5 a.m. through the first Sunday in March of the following year except as listed in the *Specific Waters Listed by County* section.

**May 4, 2024 through March 2, 2025**

**General open season daily bag, total daily bag and possession limits:** The **daily bag limit** is the maximum number of fish that an angler may reduce to his/her possession from a specified waterbody or a portion of a waterbody in one day. The **total daily bag limit** is the maximum number of fish that an angler may reduce to his/her possession in one day from all waters or portions of waters fished for that day. An angler may combine the catch of a particular species from multiple waters until the **total daily bag limit** is reached as long as the daily bag limit for each body of water is never exceeded. Be aware that while on the water, bank or shore of the water, or on the ice, you may not possess more than the daily limit for that body of water. For example, an angler catches a daily limit of brown trout from a 3-bag limit stream. The angler **cannot** then fish another stream with a 3-brown trout limit while still possessing the 3 brown trout from the previous stream. The **total daily bag limit** is 5 trout and salmon in total, but only 2 may be lake trout, except as listed in the specific waters listed by county. The **possession limit** is the maximum number of fish that a person may possess at any time. The **possession limit** is 10.

### Lake Trout Fishing In Inland Lakes

(*Salvelinus namaycush*)



**Open season:** Jan. 6, 2024 - Sept. 30, 2024; Length limit: 17"; Daily bag limit: 2; Waters: Green Lake Co. - Green Lake and tributaries upstream to the first dam; Langlade Co. - Goto Lake; Walworth Co. - Lake Geneva; Washington Co. - Big Cedar Lake

**Open season:** May 4, 2024 - Sept. 30, 2024; Length limit: 30"; Daily bag limit: 1; Waters: Forest Co. - Lucerne Lake; Oneida Co. - Big Carr Lake; Vilas Co. - Black Oak, Little Trout, Long, Trout, White Sand (Boulder Junction) lakes

**Note: Lake trout found in waters not listed above fall under the base regulation for that county.**

### Lake Michigan Streams

Lake Michigan streams up to the first dam, lake or designated tributary are shown in black on the maps. See the inland stream regulations for all stream segments above the first lake, dam or designated tributary mouth (colored coded green, yellow or red.)



Except as otherwise specified, all streams flowing into Lake Michigan and Green Bay have the following regulations from their mouths upstream to the first dam, lake or designated tributary; including the Little River from its confluence with the Oconto River upstream to the STH 141 bridge; the entire Kewaunee River and its tributaries, except Little Scarboro Creek, Scarboro Creek, Roger Creek and Casco Creek; the Manitowoc River and its tributaries upstream to the first dam or lake in Manitowoc County, Sauk Creek and its tributaries upstream to the first

dam or lake in Ozaukee County; the Milwaukee River upstream to the Grafton Dam in the village of Grafton and tributaries of the Milwaukee River upstream to the first dam or lake; the Menomonee River upstream to the Lepper Dam in the village of Menomonee Falls and tributaries of the Menomonee River upstream to the first dam or lake; the unnamed tributary (Willow Creek) to the Sheboygan River and the Pike River and its tributaries in Kenosha and Racine counties:

**Daily bag limit:** 5 trout and salmon in total

**Minimum length limit:** 10"

**Hours, seasons, gear restrictions:** From Sept. 15 to the first Saturday of the following May, you may not use hooks that have a gap size larger than one-half inch from point to shank.

**Special regulations:** The following special regulations apply to the following waters:

- Night fishing by any method: From Sept. 15 to Dec. 31, fishing by any method is prohibited from one-half hour after sunset to one-half hour before sunrise.
- Night fishing by hook and line: From Jan. 1 to the first Saturday in May, hook and line fishing is prohibited from one-half hour after sunset to one-half hour before sunrise.
- The section of the Peshtigo River upstream from the railroad bridge at the NE ¼ of the NE ¼ section 30, township 30 north, range 23 east (Peshtigo City Garage) to the first dam.
- The section of the Oconto River from the upstream side of Hwy 41 upstream to the first dam and the section of the Little River upstream from the Oconto River to Hwy 141.
- All Lake Michigan tributaries and all other Green Bay tributary streams, rivers and ditches upstream to their first dam or lake, except this DOES NOT apply to the Menominee River (Marinette Co.).

**Season:** There is a year-round season on Lake Michigan tributaries and the following stream sections of Green Bay tributaries:

- Duck Creek (Brown Co.), from the first dam above the Pamperin Park footbridge (Village of Howard) downstream to Green Bay;
- Suamico River (Brown Co.), from the CTH "HS" bridge downstream to Green Bay;
- East River (Brown Co.), from the CTH "XX" (Hoffman Road) bridge downstream to the Fox River;
- Little Suamico River (Oconto Co.), from the CTH "J" bridge downstream to Green Bay;
- Pensaukee River (Oconto Co.), from the CTH "J" bridge downstream to Green Bay;
- Oconto River (Oconto Co.), from the Stiles dam downstream to Green Bay;
- Little River (Oconto Co.), from the Highway 141 bridge downstream to the Oconto River;
- Little River (Marinette Co.), from the Rader Road bridge downstream to Green Bay; and
- Peshtigo River (Marinette Co.), from the Peshtigo dam downstream to Green Bay.

NOTE: There is no hook and line fishing allowed for any species on all other Green Bay and Fox River tributaries and ditches, including tributaries to the above streams, from their mouth up to the first dam or lake from after the first Sunday in March to before the first

Saturday in May. The open season on other Green Bay tributaries is from the first Saturday in May to the first Sunday in March, excluding the Menominee River.

**Open season for lake trout:** There is a year-round season on Lake Michigan tributaries and the following stream sections of Green Bay tributaries:

- Duck Creek (Brown Co.) from the first dam above the Pamperin Park footbridge (Village of Howard) downstream to Green Bay;
- Suamico River (Brown Co.), from the CTH "HS" bridge downstream to Green Bay;
- East River (Brown Co.), from the CTH "XX" (Hoffman Road) bridge downstream to the Fox River;
- Little Suamico River (Oconto Co.), from the CTH "J" bridge downstream to Green Bay;
- Pensaukee River (Oconto Co.), from the CTH "J" bridge downstream to Green Bay;
- Oconto River (Oconto Co.), from the Stiles dam downstream to Green Bay;
- Little River (Oconto Co.), from the Highway 141 bridge downstream to the Oconto River;
- Little River (Marinette Co.), from the Rader Road bridge downstream to Green Bay; and
- Peshtigo River (Marinette Co.), from the Peshtigo dam downstream to Green Bay.

The season for lake trout on all other Green Bay tributaries and ditches including tributaries to the sections of above named streams is May 4, 2024 to March 2, 2025.

## Lake Superior Streams

*(all streams are located in Ashland, Bayfield, Douglas and Iron counties and shown as black on the maps)*



The regulations for Lake Superior vary according to the life histories of river resident and lake-run migratory trout and salmon.

Many streams from their mouths at Lake Superior upstream to the first impassable permanent barrier have early and extended fishing seasons in the spring and fall, which are listed with their regulations in the Specific Waters Listed by County section. Any stream not listed in that section has the following general regulation:

**Open season:** May 4, 2024 at 5 a.m. to Sept. 30, 2024

**Daily bag limit:** 5 trout and salmon in total, only 2 of which may be brown trout over 15" and only 1 of which may be a rainbow trout

**Minimum length limit:** brook trout 8", brown trout 10", salmon 12" and rainbow trout 26".

Impassable permanent barriers on Lake Superior streams include, but are not limited to, the following:

County	Water	Impassable Barrier Sect, T'ship, Range
Ashland	Bad River	Copper Falls S17, T45N, R2W
	Tyler Forks	Copper Falls S17, T45N, R2W
Bayfield	Iron River	Sea lamprey barrier S10, T49N, R9W
	White River	Hydroelectric dam S6, T46N, R4W
	Siskiwit River	Falls S35, T51N, R6W
Douglas	Amnicon River	Amnicon Falls S29, T48N, R12W
	Balsam Creek	Falls S29, T46N, R15W
	Black River	Pattison Falls S21, T47N, R14W
	Copper Creek	Falls S15, T47N, R14W
Iron	Montreal River	Hydroelectric dam S7, T47N, R1E
	Potato River	Falls S18, T46N, R1W

## Abbreviations And Explanations:

- **STH** = state highway; **CTH** = county highway; **USH** = United States highway
- **Artificial Lure** means a spoon, spinner, plug or other fish bait made of hair, feathers, cork, wood, rubber, metal, plastic or other synthetic materials, or combinations of these materials. An "artificial lure" may not include natural or organic foodstuffs such as corn, marshmallows, dough, cheese, meat, living or dead organisms or parts thereof, except hair, feathers, cork, wood and rubber.
- **Urban Waters** are lakes and ponds which are intensively and cooperatively managed with a municipality. They are posted with signs and have a large part of the shoreline open for public access. Search "urban fishing" at [dnr.wi.gov](http://dnr.wi.gov) for more information.
- Some waters have seasons, length and bag limits for trout, but are not designated trout streams.
- **Native American Reservations:** Access to streams or lakes on Native American reservations must be with the permission of the landowner or from lands open to the public, such as public roads. Entering or fishing from tribal lands could subject you to tribal or federal trespass laws.
- **Base Regulation:** The base regulation is the regulation category given to all waters in a county that are not specially regulated - generally identified as "all waters not listed."

## Specific Waters Listed By County

### Trout Regulations By Category

Category: Green	Daily bag limit and length limit: 5 trout in total of any length
Category: Yellow	Daily bag limit and length limit: 3 trout in total over 8"
Category: Red	Special regulations: length, bag and possession limits vary by specific water
Category: Black	Lake Superior (Category LS) or Lake Michigan (Category LM) tributaries – see Lake Michigan or Lake Superior sections pages 2-3

### ADAMS

**ALL WATERS NOT LISTED**— Yellow

**FAIRBANKS CREEK**— Red

**Daily bag and length limit:** 2 trout over 12"

**FORDHAM CREEK**— Red

**Daily bag and length limit:** 3 in total; brown and rainbow trout over 12"; brook trout over 8"

**LAWRENCE CREEK**— Green

**NEENAH CREEK**— Red

**Daily bag and length limit:** 2 trout over 12"

**Gear restrictions:** only artificial lures may be used

### ASHLAND

**ALL INLAND WATERS NOT LISTED**— Green

**MARENGO RIVER**—Upstream from STH 13 to County Line Rd — Red

**Daily bag limit and length limit:** 3 in total: brown and rainbow trout over 12"; brook trout over 8"

**ALL LAKE SUPERIOR (LS) STREAMS**— See the regulations under Lake Superior streams on page 3.

**ALL LAKE SUPERIOR (LS) STREAMS NOT LISTED**— See the regulations under Lake Superior streams on page 3

**BAD RIVER (LS)**—Downstream from Devil's Gate

**Open season:** March 30 to Nov. 15

**BRUNSWELLER RIVER (LS)**—Downstream from STH 13

**Open season:** March 30 to Nov. 15

**MARENGO RIVER (LS)**—Downstream from STH 13

**Open season:** March 30 to Nov. 15

**POTATO RIVER (LS)**

**Open season:** March 30 to Nov. 15

**WHITE RIVER (LS)**—Downstream from White River Dam

**Open season:** March 30 to Nov. 15

### BARRON

**ALL WATERS NOT LISTED**— Green

**BEAVER DAM LAKE**— Red

**Daily bag limit and length limit:** 1 trout over 18"

**Open season:** May 4 at 5 a.m. to March 2, 2025

**BRILL RIVER**— Red

**Daily bag limit and length limit:** 2 trout over 12"

### BAYFIELD

**ALL INLAND WATERS NOT LISTED**— Green

**CAP CREEK**— Red

**Daily bag limit:** all trout caught must be immediately released

**Gear restriction:** only artificial lures may be used

**IRON RIVER**—Upstream from the sea lamprey barrier at the former site of the Orienta Dam— Yellow

**LONG LAKE BRANCH OF WHITE RIVER**—Downstream from Taylor Lane to White River — Red

**Daily bag and length limit:** 1 trout over 18"

**NAMEKAGON RIVER**— Red

**Daily bag and length limit:** 1 trout over 14"

**Gear restriction:** only artificial lures may be used

**SCHULTZ SPRINGS**— Red

**Daily bag limit:** all trout caught must be immediately released

**Gear restriction:** only artificial lures may be used

**WHITE RIVER**—Upstream from Pikes Bridge— Yellow

**WHITE RIVER**—Downstream from Pikes Bridge to the White River Dam— Red

**Daily bag and length limit:** 1 trout over 18"

**WHITE RIVER (EAST FORK)**— Yellow

**WHITE RIVER (SOUTH FORK and SPRINGS)**— Yellow

**WHITE RIVER (UNNAMED TRIBUTARIES)**— Yellow

**WHITE RIVER (WEST FORK)**— Yellow

**ALL LAKE SUPERIOR (LS) STREAMS NOT LISTED**— See the regulations under Lake Superior streams on page 3

**ALL LAKE SUPERIOR (LS) STREAMS**— see the regulations under Lake Superior streams on page 3

**BARK RIVER AND ALL ITS TRIBUTARIES (LS)**

**Open season:** May 4 at 5 a.m. to Nov. 15

**Daily bag limit:** 5 trout and salmon in total, only 2 of which may be brown trout over 15" and only 1 of which may be a rainbow trout and all brook trout must be immediately released

**Length limit:** brown trout 10", salmon 12" and rainbow trout 26"

**BONO CREEK (LS)**

**Open season:** May 4 at 5 a.m. to Nov. 15

**BOYD CREEK (LS)**

**Open season:** May 4 at 5 a.m. to Nov. 15

**CRANBERRY RIVER (LS)**— Downstream from Lenawee Road (S28, T50N, R7W)

**Open season:** March 30 to Nov. 15

**FISH CREEK (NORTH FORK) (LS)**—Downstream from Pine Creek (S13, T47N, R6W)

**Open season:** March 30 to Nov. 15

**FLAG RIVER (LS)**—Downstream from East Fork of Flag River

**Open season:** March 30 to Nov. 15

**IRON RIVER AND ALL ITS TRIBUTARIES (LS)**—Downstream from the sea lamprey barrier at the former site of the Orienta Dam

**Open season:** March 30 to Nov. 15

**ONION RIVER (LS)**—Downstream from Lake Superior district Power Company power line (S6, T49N, R4W)

**Open season:** May 4 at 5 a.m. to Nov. 15

**PIKES CREEK (LS)**—Downstream from the Red Dam

**Open season:** May 4 at 5 a.m. to Nov. 15

**PINE CREEK (LS)**—Downstream from junction with Little Pine Creek (S11, T47N, R6W)

**Open season:** May 4 at 5 a.m. to Nov. 15

**SIoux RIVER, LITTLE (LS)**—see the regulations under Lake Superior streams on page 3

**SIoux RIVER (LS)**—Downstream from the Big Rock Falls Dam (S19, T49N, R4W)

**Open season:** March 30 to Nov. 15

**SISKIWIT RIVER (LS)**—Downstream from second bridge from mouth (S35, T51N, R6W)

**Open season:** March 30 to Nov. 15

**WHITTLESEY CREEK (LS)**—Downstream from Town Hall Road

**Open season:** May 4 at 5 a.m. to Nov. 15

**Daily bag limit:** 5 trout and salmon in total, only 2 of which may be brown trout over 15" and only 1 of which may be a rainbow trout and all brook trout must be immediately released

**Length limit:** brown trout 10", salmon 12" and rainbow trout 26"

## BROWN

**ALL WATERS**— Yellow—For streams flowing into Green Bay see regulations under Lake Michigan streams on page 2

## BUFFALO

**ALL WATERS NOT LISTED**— Green

**BEAR CREEK and all its tributaries (Newton Valley Creek and 5-9)**— Red

**Daily bag limit and length limit:** 3 in total: brown and rainbow trout over 12"; brook trout over 8"

## BURNETT

**ALL WATERS**— Green

## CALUMET

**ALL WATERS**— Green

## CHIPPEWA

**ALL WATERS NOT LISTED**— Green

**NOTE:** The only lakes where trout and salmon may be fished after Oct. 15 are Henneman, Bradley and Dark (S10, T32N, R9W)

**DUNCAN CREEK**—Downstream of Bloomer Dam to Cty Hwy B— Red

**Daily bag limit and length limit:** 3 in total: brown and rainbow trout over 12"; brook trout over 8"

**ELK CREEK and all its tributaries (Big Elk Creek, 35-12, 5-16, 17-11, 4-2, 19-16)**— Red

**Daily bag limit and length limit:** 5 fish under 12"

**McCANN CREEK**— Red

**Daily bag limit and length limit:** 5 in total: brown and rainbow trout no minimum length limit; brook trout under 9"

## CLARK

**ALL WATERS**— Green

## COLUMBIA

**ALL WATERS NOT LISTED**— Yellow

**DURWARD'S GLENN CREEK (PRENTICE CREEK)** — Red

**Daily bag limit and length limit:** 5 in total: brown and rainbow trout no minimum length limit; brook trout under 9"

**LODI (SPRING) CREEK**—Downstream from CTH J— Red

**Daily bag limit and length limit:** 2 trout over 12"

**Gear restriction:** only artificial lures may be used

## CRAWFORD

**ALL WATERS NOT LISTED**— Green

**HALLS BRANCH**— Red

**Daily bag limit and length limit:** 5 trout in total: all brook trout caught must be immediately released; brown trout and rainbow trout no minimum length

**HOOVER CREEK**— Yellow

**KNAPP CREEK**— Red

**Daily bag and length limit:** 5 trout under 12"

**PLUM CREEK**— Red

**Daily bag and length limit:** 5 trout in total: all brook trout caught must be immediately released; brown trout and rainbow trout no minimum length

**PLUM RUN**—Below CTH U - Green

**UNNAMED CREEK 36-14 (S36, T9N, R3W)**— Yellow

## DANE

**ALL WATERS NOT LISTED**— Yellow

**BLACK EARTH CREEK**—USH 14 (east side of Mazomanie) upstream to South Valley Rd- Red

**Daily bag and length limit:** 1 trout over 18"

**MOUNT VERNON CREEK**—CTH U downstream to STH 92— Red

**Daily bag and length limit:** 5 trout under 12"

## DODGE

**ALL WATERS**— Yellow

## DOOR

**ALL WATERS**— Yellow —For streams flowing into Lake Michigan and Green Bay see the regulations under Lake Michigan streams on page 2

## DOUGLAS

**ALL INLAND WATERS NOT LISTED**— Green

**ALL LAKE SUPERIOR (LS) STREAMS NOT LISTED**—See the regulations under Lake Superior streams on page 3

**ALL LAKE SUPERIOR (LS) STREAMS**— See the regulations under Lake Superior streams on page 3

**AMNICON RIVER (LS)**—Downstream from Amnicon Falls

**Open season:** March 30 to Nov. 15

**BLACK RIVER (LS)**—Downstream from Big Manitou Falls

**Open season:** March 30 to Nov. 15

**BRULE RIVER (LS)**—Downstream from USH 2

**Open season:** March 30 to Nov. 15

Fishing is prohibited from ½ hour after sunset to ½ hour before sunrise from March 30 to May 4 and from Oct. 1 through Nov. 15.

**BRULE RIVER (LS)**—CTH S downstream to CTH B

**Open season:** May 4 at 5 a.m. to Sept. 30

**Gear restriction:** only artificial lures may be used

**Daily bag limit:** 3 trout and salmon in total, only 2 of which may be brown trout, only 1 of which may be a rainbow trout

**Length limit:** brook trout 10" brown trout 15", salmon 12", and rainbow trout 26"

**BRULE RIVER (LS)**—Remainder not covered above—

Base regulation for Lake Superior streams on page 3

**MIDDLE RIVER (LS)**—Downstream from USH 2

**Open season:** March 30 to Nov. 15

**NEMADJI RIVER (LS)**—Downstream from Great Northern RR Bridge (S4, T47N, 14W)

**Open season:** March 30 to Nov. 15

**POPLAR RIVER (LS)**—

**Open season:** March 30 to Nov. 15

**ST. LOUIS RIVER (LS)**—Downstream from Wisconsin-Minnesota state line

**Open season:** March 30 to Nov. 15

## DUNN

**ALL WATERS NOT LISTED**— Green

**CADY CREEK**— Red

**Daily bag limit and length limit:** 5 trout in total: all brook trout caught must be immediately released; brown trout and rainbow trout no minimum length

**EAU GALLE RIVER**— Red

**Daily bag limit and length limit:** 3 in total: brown and rainbow trout over 12"; brook trout over 8"

**ELK CREEK**— Upstream from Elk Creek Lake Dam (Big Elk Creek, 17-11, 2-8, 1-1) — Red

**Daily bag limit and length limit:** 5 trout under 12"

**ELK CREEK**— Downstream from Elk Creek Lake Dam and all tributaries— Red

**Daily bag limit and length limit:** 1 trout over 18"

**ELK CREEK LAKE**— Red

**Daily bag limit and length limit:** 5 trout under 12"

**Season:** May 4 at 5 a.m. to March 2, 2025

**SAND CREEK**—10th St downstream to Red Cedar River— Red

**Daily bag limit and length limit:** 1 trout over 18"

**Gear restrictions:** only artificial lures may be used

## EAU CLAIRE

**ALL WATERS NOT LISTED**— Green

**NOTE:** The only ponds where trout and salmon may be fished after Oct. 15 are Fall Creek and Fairchild ponds.

**BEARS GRASS CREEK**— Red

**Daily bag limit and length limit:** 5 in total: brown and rainbow trout no minimum length"; brook trout under 9"

**ELK CREEK**— Red

**Daily bag limit and length limit:** 5 trout under 12"

**OTTER CREEK**— Red

**Daily bag limit and length limit:** 3 in total: brown and rainbow trout over 12"; brook trout over 8"

## FLORENCE

**ALL WATERS NOT LISTED**— Yellow

**BRULE RIVER**—Upstream from USH 2— Red

**Daily bag limit and length limit:** 5 in total: brown trout over 12"; brook trout over 8"

**Season:** April 27 to Sept. 30

**BRULE RIVER**—Downstream from USH 2— Red

**Daily bag limit and length limit:** 5 trout over 7"

**Season:** April 27 to Sept. 30

**KEYES LAKE**— Red

**Daily bag limit and length limit:** 2 trout over 12"

**Season:** May 4 at 5 a.m. to March 2, 2025

**PEMBOBONWON RIVER, NORTH BRANCH**— Green

**POPPLE RIVER**—Downstream from STH 139

**Season:** May 4 to Oct. 15 - Yellow

**WOODS CREEK**— Downstream from STH 101— Red

**Daily bag limit and length limit:** 2 trout over 12"

## FOND DU LAC

**ALL WATERS NOT LISTED**— Yellow

**SILVER CREEK**— Green

## FOREST

**ALL WATERS NOT LISTED**— Yellow

**BRULE CREEK**— Red

**Daily bag limit and length limit:** 3 trout over 10"

**BRULE RIVER**— Red

**Daily bag limit and length limit:** 5 in total: brown trout over 12"; brook trout over 8"

**Season:** April 27 to Sept. 30

**BRULE SPRINGS**— Red

**Daily bag limit and length limit:** 3 trout over 10"

**EAST BRANCH LILY RIVER**—Green

**ELVOY CREEK**— Red

**Daily bag limit and length limit:** 3 trout over 10"



**ELVOY SPRINGS** (S20, T41N, R13E)— Red

**Daily bag limit and length limit:** 3 trout over 10"

**FOURMILE CREEK**—Green

**LAKE LUCERNE**— Red

**Daily bag limit and length limit:** 1 lake trout over 30", other trout — Yellow

**Season:** lake trout—May 4 at 5 a.m. to Sept. 30. other trout— May 4 at 5 a.m. to March 2, 2025

**LILY RIVER**—Green

**PESHTIGO RIVER**— Downstream from STH 8

**Season:** May 4 to Oct. 15— Yellow

**RAT RIVER**

**Season:** May 4 to Oct. 15— Yellow

**UNNAMED CREEK 11-8**— Green

**UNNAMED CREEK 12-9**— Green

**UNNAMED CREEK 13-15**— Green

## GRANT

**ALL WATERS NOT LISTED**— Yellow

**BIG GREEN RIVER**—Upstream from STH 133— Red

**Daily bag limit and length limit:** 5 trout under 12"

**BIG SPRING BRANCH**—Upstream from Pine Tree Road— Red

**Daily bag limit and length limit:** 5 trout in total: all brook trout caught must be immediately released; brown trout and rainbow trout no minimum length

**Gear restriction:** only artificial lures may be used

**BLUE RIVER**—Biba Road Upstream to Snow bottom Road— Red

**Daily bag limit and length limit:** 2 trout over 12"

**BLUE RIVER**—Upstream from Snow Bottom Road— Red

**Daily bag limit:** all trout caught must be immediately released

**Gear restriction:** only artificial lures may be used

**BORAH CREEK**— Red

**Daily bag limit and length limit:** 5 trout under 12"

**BRONSON CREEK** —downstream from Vavricka Road— Red

**Daily bag limit:** all trout caught must be immediately released

**Gear restriction:** only artificial lures may be used

**CASTLE ROCK CREEK**—Upstream from Witek Road to third CTH Q Bridge (S30 SESW, T7N, R1W)— Red

**Daily bag limit and length limit:** 2 trout over 12"

**CASTLE ROCK CREEK and SPRING**— From third CTH Q bridge (S30 SESW, T7N, R1W) upstream to Church Road— Red

**Daily bag limit:** all trout caught must be immediately released

**Gear restriction:** only artificial lures may be used

**CROOKED CREEK**— Red

**Daily bag limit and length limit:** 5 trout under 12

**DOC SMITH BRANCH**—From Castle Rock Creek upstream to 0.5 mile upstream from Everson Road— Red

**Daily bag limit:** all trout caught must be immediately released

**Gear restriction:** only artificial lures may be used

**GRANT RIVER**—CTH A upstream to CTH K— Red

**Daily bag limit:** all trout caught must be immediately released

**LITTLE GRANT RIVER**—Govier Rd upstream to Milner Rd— Red

**Daily bag limit and length limit:** 5 trout under 12"

**LITTLE PLATTE RIVER**—From Waterfall Road upstream to STH 80— Red

**Daily bag limit:** all trout caught must be immediately released

**Gear restriction:** only artificial lures may be used

**MILLVILLE CREEK**— Red

**Daily bag limit and length limit:** 2 trout over 12"

## GREEN

**ALL WATERS**— Yellow

## GREEN LAKE

**ALL WATERS NOT LISTED**— Green

**GREEN LAKE** — Red

**Daily bag limit and length limit:** 2 lake trout over 17", 3 other trout over 14"

**Season:** lake trout —Jan. 6 to Sept. 30; other trout — May 4 at 5 a.m. to March 2, 2025

## IOWA

**ALL WATERS NOT LISTED**— Yellow

**BAKER CREEK**— Red

**Daily bag limit and length limit:** 5 trout in total: all brook trout caught must be immediately released; brown trout and rainbow trout no minimum length

**Gear restriction:** only artificial lures may be used

**BIG SPRING BRANCH**— Red

**Daily bag limit and length limit:** 5 trout in total: all brook trout caught must be immediately released; brown trout and rainbow trout no minimum length

**Gear restriction:** only artificial lures may be used

**BLUERIVER**—Upstream to 0.5 mile upstream of Blue River Road— Red

**Daily bag limit:** all trout caught must be immediately released

**Gear restriction:** only artificial lures may be used

**CAVE HOLLOW CREEK**— Red

**Daily bag limit and length limit:** 5 trout in total: all brook trout caught must be immediately released; brown trout and rainbow trout no minimum length

**Gear restriction:** only artificial lures may be used

**GORDON CREEK**—STH 78 upstream to Spring Creek Road— Red

**Daily bag limit and length limit:** 5 trout under 12"

**HARKER CREEK**— Upstream of the confluence with Flint Creek— Red

**Daily bag limit and length limit:** 5 trout in total: all brook trout caught must be immediately released; brown trout and rainbow trout no minimum length

**Gear restriction:** only artificial lures may be used

**LOWERY CREEK**— Upstream from State Highway 23— Red

**Daily bag limit and length limit:** 5 trout in total: all brook trout caught must be immediately released; brown trout and rainbow trout no minimum length

**Gear restriction:** only artificial lures may be used

**NARVESON CREEK** — Downstream from Blackhawk Lake to Otter Creek— Red

**Daily bag limit:** all trout caught must be immediately released

**OTTER CREEK**—CTH II Upstream to Plank Road— Red

**Daily bag limit:** all trout caught must be immediately released

**OTTER CREEK**—Upstream from Cave Hollow Road— Red

**Daily bag limit and length limit:** 5 trout in total: all brook trout caught must be immediately released; brown trout and rainbow trout no minimum length

**Gear restriction:** only artificial lures may be used

**POMPEY PILLAR CREEK**—Upstream from CTH I— Red

**Daily bag limit and length limit:** 5 trout in total: all brook trout caught must be immediately released; brown trout and rainbow trout no minimum length

**Gear restriction:** only artificial lures may be used

**TROUT CREEK**—Upstream from Dry Dam— Red

**Daily bag limit and length limit:** 5 trout in total: all brook trout caught must be immediately released; brown trout and rainbow trout no minimum length

**Gear restriction:** only artificial lures may be used

## IRON

**ALL INLAND WATERS NOT LISTED**— Green

**ALL LAKE SUPERIOR (LS) STREAMS NOT LISTED**—See the regulations under Lake Superior streams on page 3

**ALL LAKE SUPERIOR (LS) STREAMS**—See the regulations under Lake Superior streams on page 3

**GRAVEYARD CREEK AND ITS TRIBUTARIES (LS)**— Downstream from USH 2

**Open season:** March 30 to Nov. 15

**MONTREAL RIVER (LS)**—Downstream from Superior Falls

**Open season:** Continuous open season

**Daily bag limit and length limit:** 5 trout or salmon in total over 10"

**MONTREAL RIVER**—Upstream from Superior Falls along the Wisconsin/Michigan boundary

**Open season:** April 27 - Sept. 30

**Daily bag limit and length limit:** 5 trout over 7"

**ORONTO CREEK AND ITS TRIBUTARIES (LS)**

**Open season:** March 30 to Nov. 15

**PARKER CREEK (LS)**

**Open season:** March 30 to Nov. 15

## JACKSON

**ALL WATERS NOT LISTED**— Green

**LAKE WAZEE**— Red

**Daily bag limit and length limit:** 2 trout over 12"

**Season:** May 4 at 5 a.m. to March 2, 2025

## JEFFERSON

**ALL WATERS**— Yellow

## JUNEAU

**ALL WATERS**— Yellow

## KENOSHA

**ALL WATERS**— Yellow —For streams flowing into Lake Michigan, see the regulations under Lake Michigan streams on page 2

## KEWAUNEE

**ALL WATERS**— Yellow —For streams flowing into Lake Michigan, see the regulations under Lake Michigan streams on page 2

## LA GROSSE

**ALL WATERS NOT LISTED**— Green

**BOHEMIAN VALLEY CREEK**— Red

**Daily bag limit and length limit:** 10 trout in total, no minimum length

**GARBERS COULEE**— Red

**Daily bag limit and length limit:** 5 trout in total, brown trout and rainbow trout no minimum length, all brook trout caught must be immediately released

**MORMON COULEE CREEK**— Red

**Daily bag limit and length limit:** 10 trout in total, no minimum length

**PAMMEL CREEK**— Red

**Daily bag limit:** all trout caught must be immediately released

## LAFAYETTE

**ALL WATERS NOT LISTED**— Yellow

**STEINER CREEK**— Red

**Daily bag limit:** all trout caught must be immediately released

**Gear restriction:** only artificial lures may be used

## LANGLADE

**ALL WATERS NOT LISTED**— Green

**NOTE:** The only lakes in Langlade County where trout and salmon may be fished after Oct. 15 are: Crooked, Florence, Goto (Lake trout season is from the first Saturday in January through Sept. 30th), Jack, Moose, Pence, Remington (kids <16 and certain disabled adults only), Rogers and Townline (S6, T33N, R10E)

**BLUE SPRINGS**— Red

**Daily bag limit and length limit:** 3 in total: brown and rainbow trout over 12"; brook trout over 8"

**CLUBHOUSE SPRING POND**— Yellow

**DEMLOW LAKES (SPRINGS; UPPER and LOWER)**— Yellow

**DREW CREEK**— Yellow

**EAU CLAIRE RIVER (EAST BRANCH)**—Blue Bell Road downstream to River Road— Red

**Daily bag limit and length limit:** 5 in total: No fish may be kept between 10"-16" and 1 fish over 16" may be kept

**ELTON SPRING POND**— Yellow

**GARSKI FLOWAGE**— Yellow

**GOTO LAKE**— Red

**Daily bag limit and length limit:** 2 lake trout over 17"; 5 other trout of any size— Green

**Season:** lake trout - Jan. 6, 2024 through Sept. 30, 2024; other trout - May 4, 2024 at 5 a.m. through March 2, 2025

**HATTON SPRINGS**— Yellow

**HOGLEE SPRINGS (No. 1 and 2)**— Yellow

**HOGLOT SPRINGS**— Yellow

**HUNTING RIVER**—Downstream from Fitzgerald Dam Road— Red

**Daily bag limit and length limit:** 3 in total: brown and rainbow trout over 12"; brook trout over 8"

**KARBERGERS SPRINGS**— Yellow

**MAXWELL SPRING**— Yellow

**MAYKING CREEK AND FLOWAGE**— Yellow

**MCCASLIN SPRING**— Yellow

**MCCASLIN Brook**— Yellow

**MCGEE LAKE**— Red

**Season:** May 4, 2024 at 5 a.m. through Oct. 15

**Daily bag limit and length limit:** 2 trout over 12"

**Gear restriction:** only artificial lures may be used

**MOOSE LAKE**— Yellow

**MOOSE SPRINGS**— Yellow

**NIXON SPRINGS**— Yellow

**OCONTO RIVER (SOUTH BRANCH)**— Yellow

**PLOVER RIVER**— Red

**Daily bag limit and length limit:** 3 in total: brown and rainbow trout over 12"; brook trout over 8"

**PRAIRIE RIVER**— Red

**Daily bag limit and length limit:** 3 in total: brown and rainbow trout over 12"; brook trout over 8"

**PROSPECT CREEK**— Yellow

**SAUL SPRING**— Yellow





**SPRING Brook**— Red

**Daily bag limit and length limit:** 5 in total: brown and rainbow trout no minimum length; only brook trout under 9" may be kept.

*Regulations are continued on page 25*

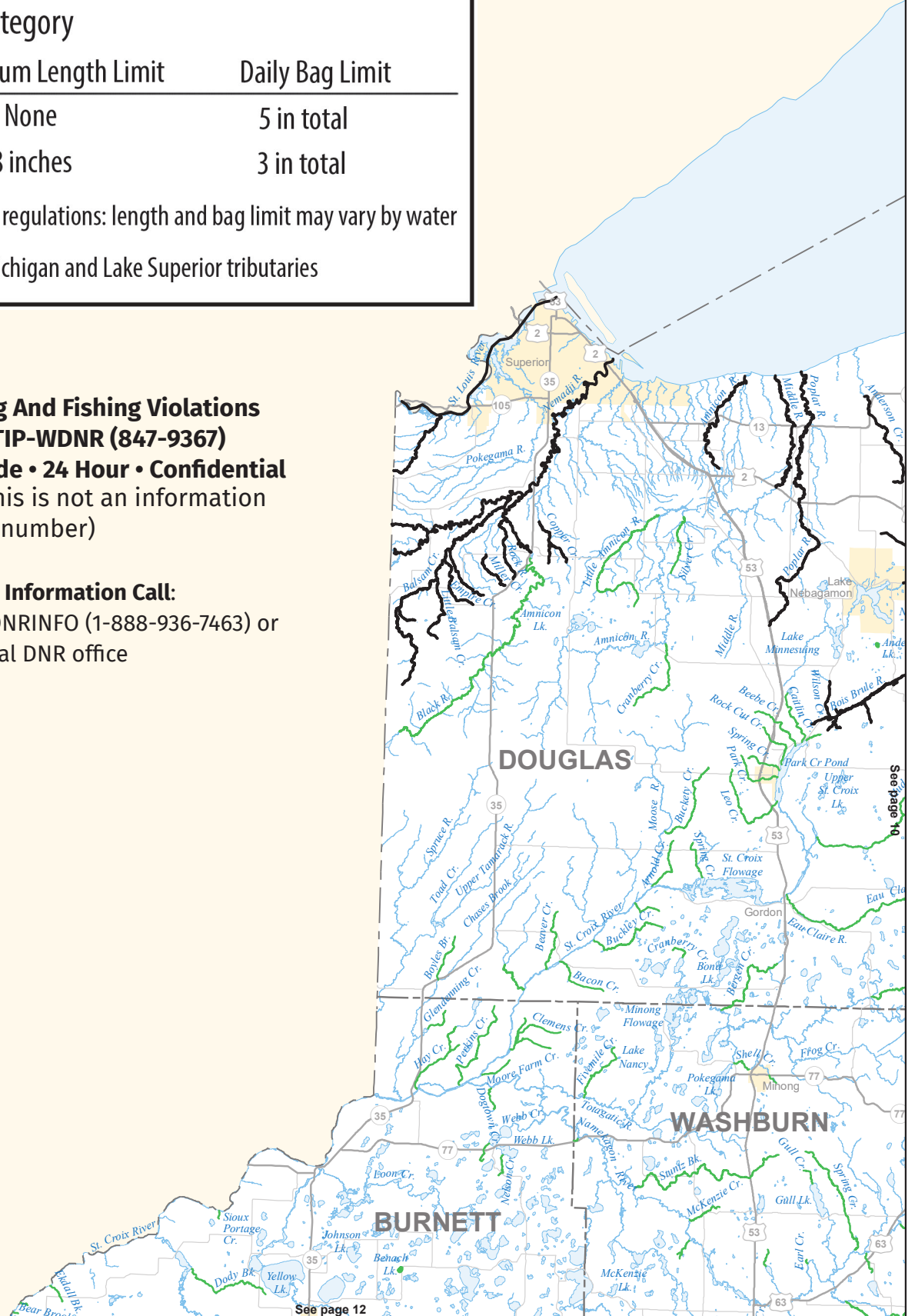
## TROUT REGULATIONS KEY

### Regulations Category

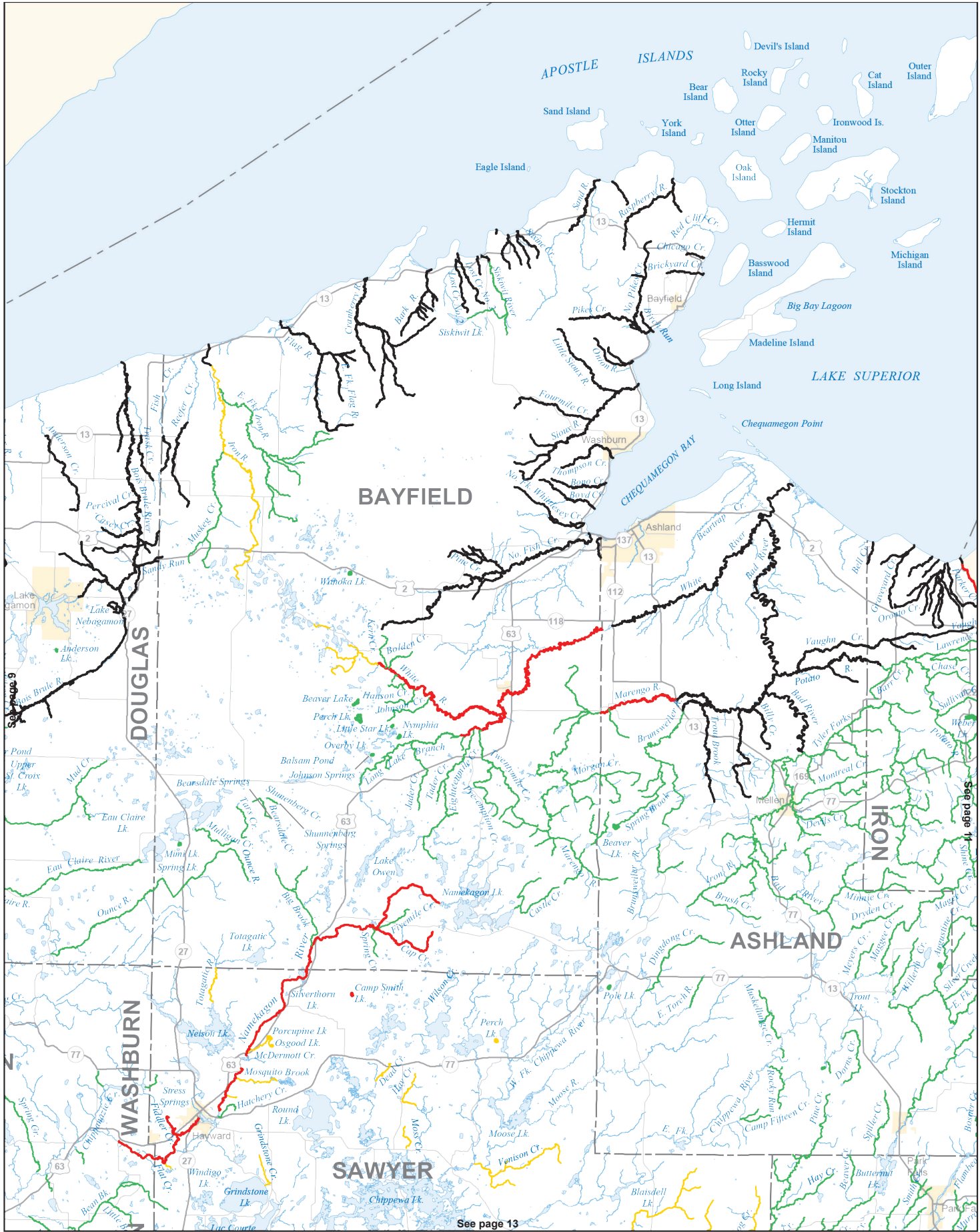
Color	Minimum Length Limit	Daily Bag Limit
	None	5 in total
	8 inches	3 in total
	Special regulations: length and bag limit may vary by water	
	Lake Michigan and Lake Superior tributaries	

**Report Hunting And Fishing Violations**  
**Call 1-800-TIP-WDNR (847-9367)**  
**Toll Free Statewide • 24 Hour • Confidential**  
 (Please note: This is not an information number)

**General Information Call:**  
 toll free 1-888-WDNRINFO (1-888-936-7463) or  
 local DNR office



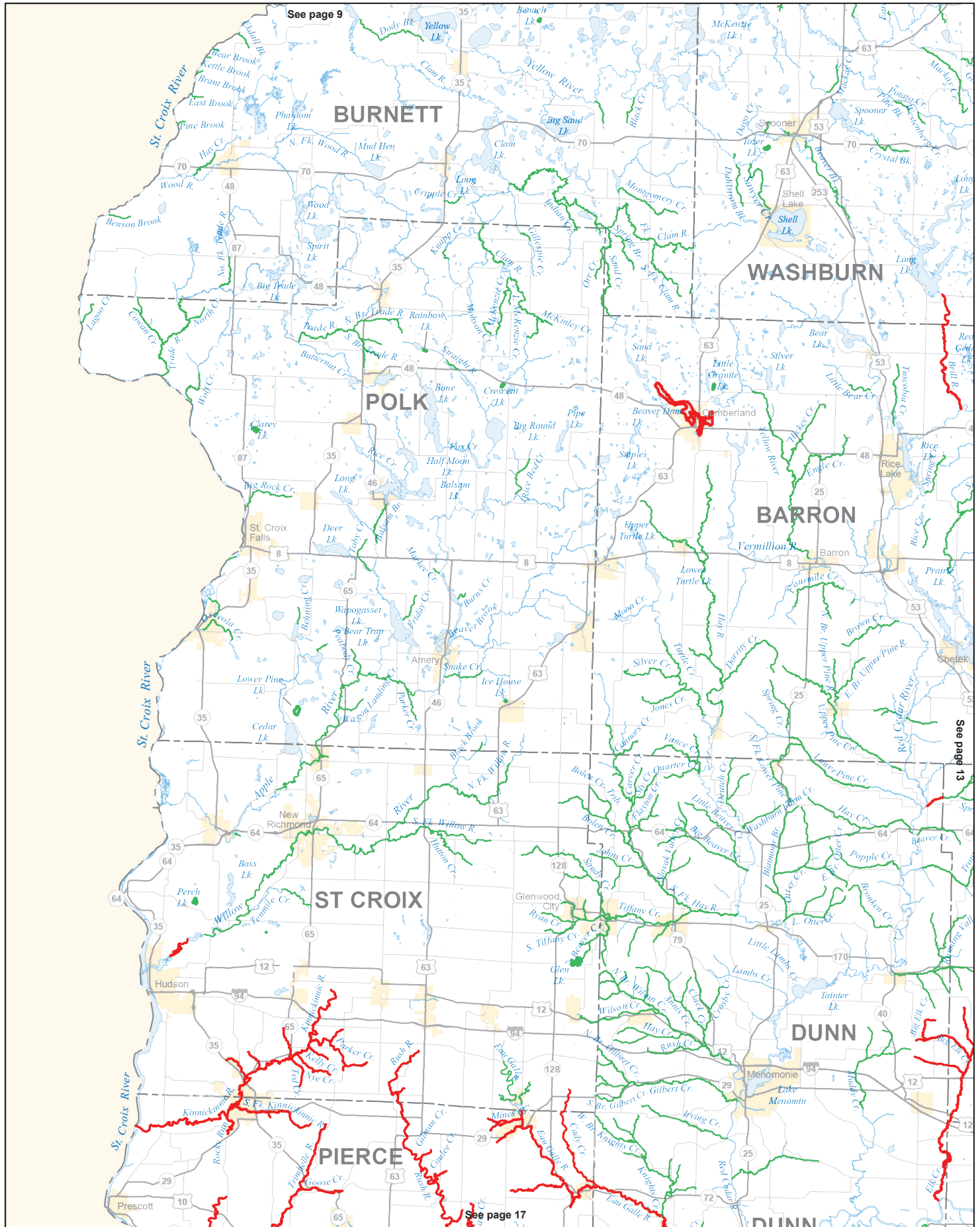
PLEASE NOTE: Maps cannot be used to determine the exact regulations or boundaries between waters. You should always follow the regulations printed in this guide or posted on site.



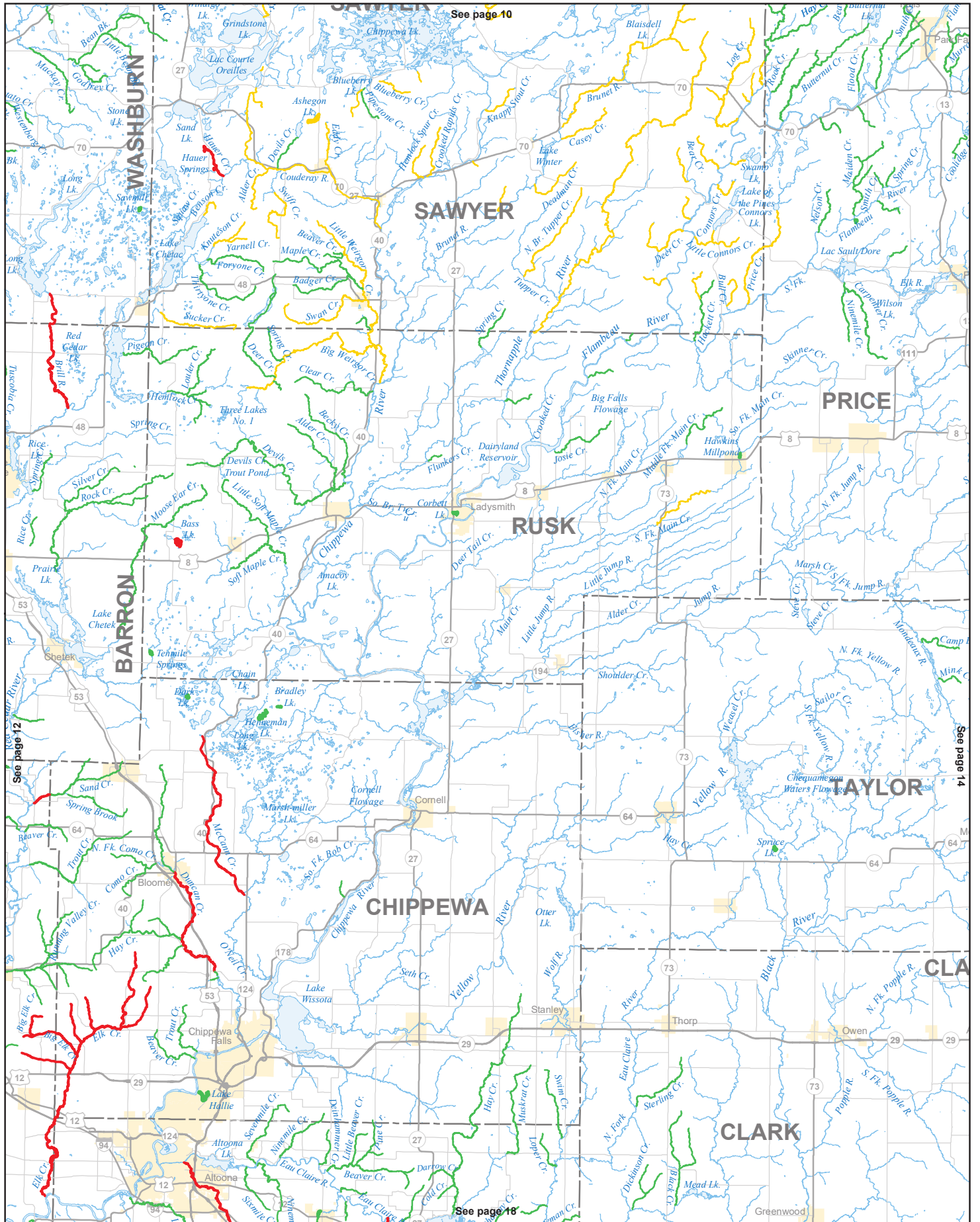
See page 13

PLEASE NOTE: Maps cannot be used to determine the exact regulations or boundaries between waters. You should always follow the regulations printed in this guide or posted on site.

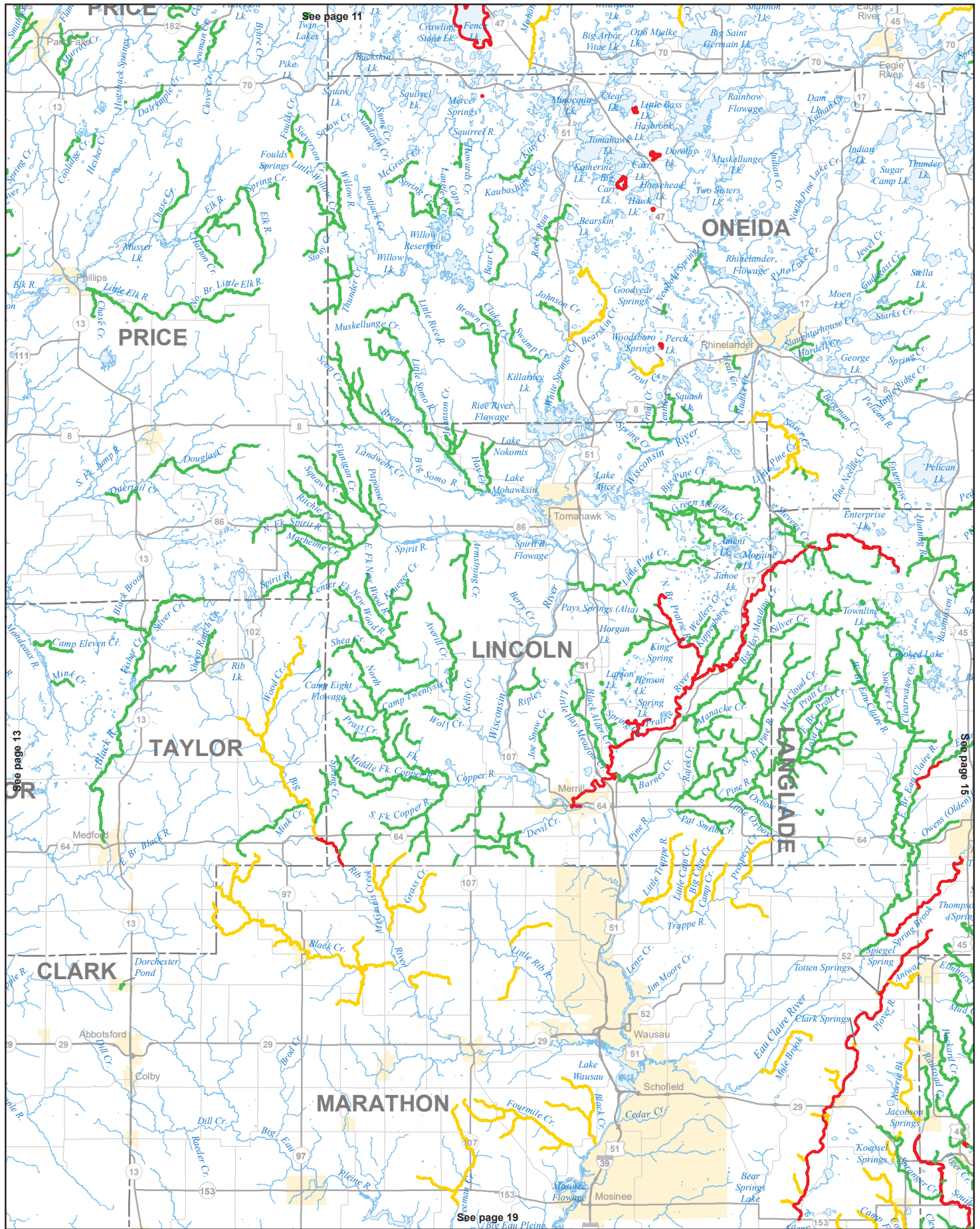




PLEASE NOTE: Maps cannot be used to determine the exact regulations or boundaries between waters. You should always follow the regulations printed in this guide or posted on site.

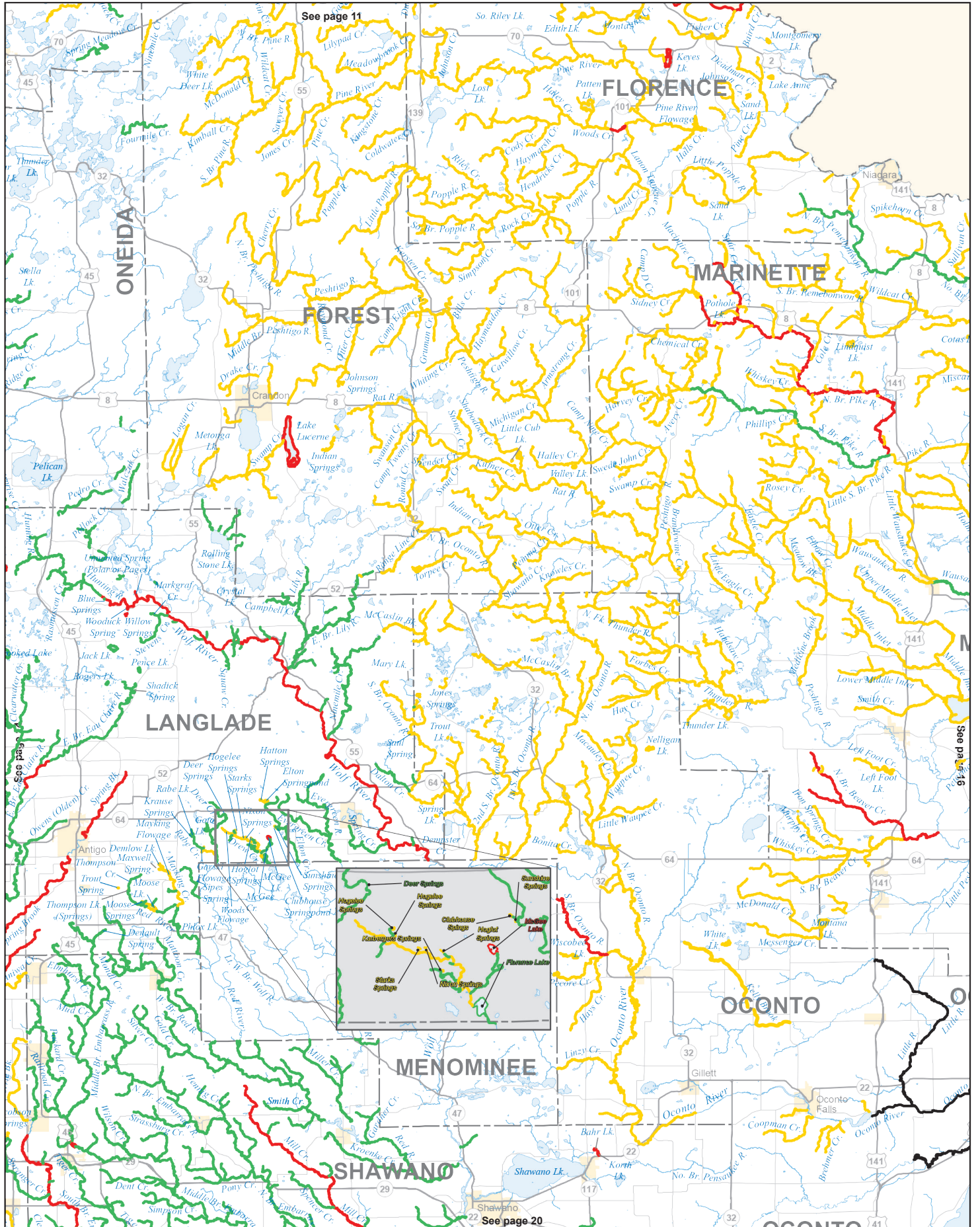


PLEASE NOTE: Maps cannot be used to determine the exact regulations or boundaries between waters. You should always follow the regulations printed in this guide or posted on site.

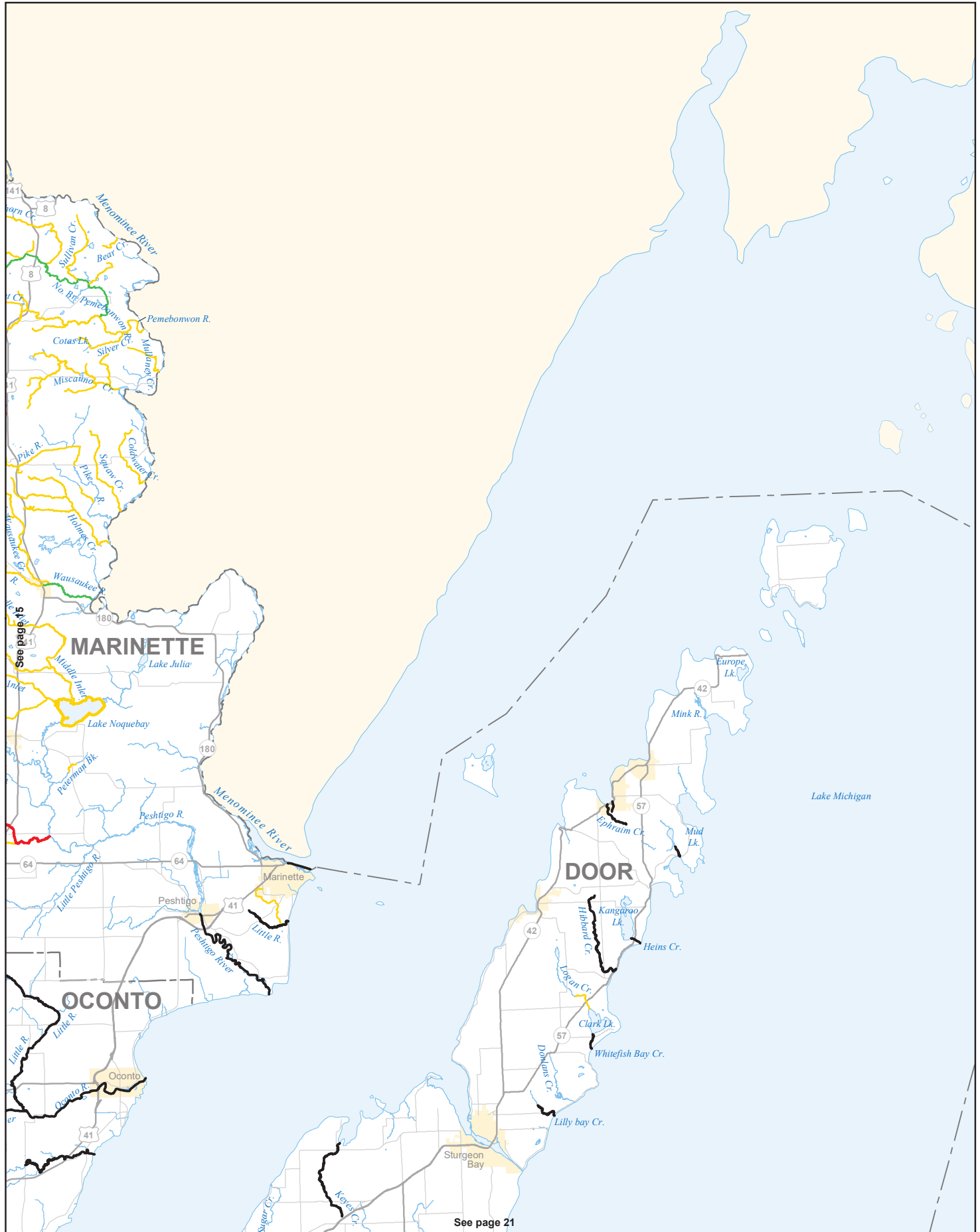


PLEASE NOTE: Maps cannot be used to determine the exact regulations or boundaries between waters. You should always follow the regulations printed in this guide or posted on site.

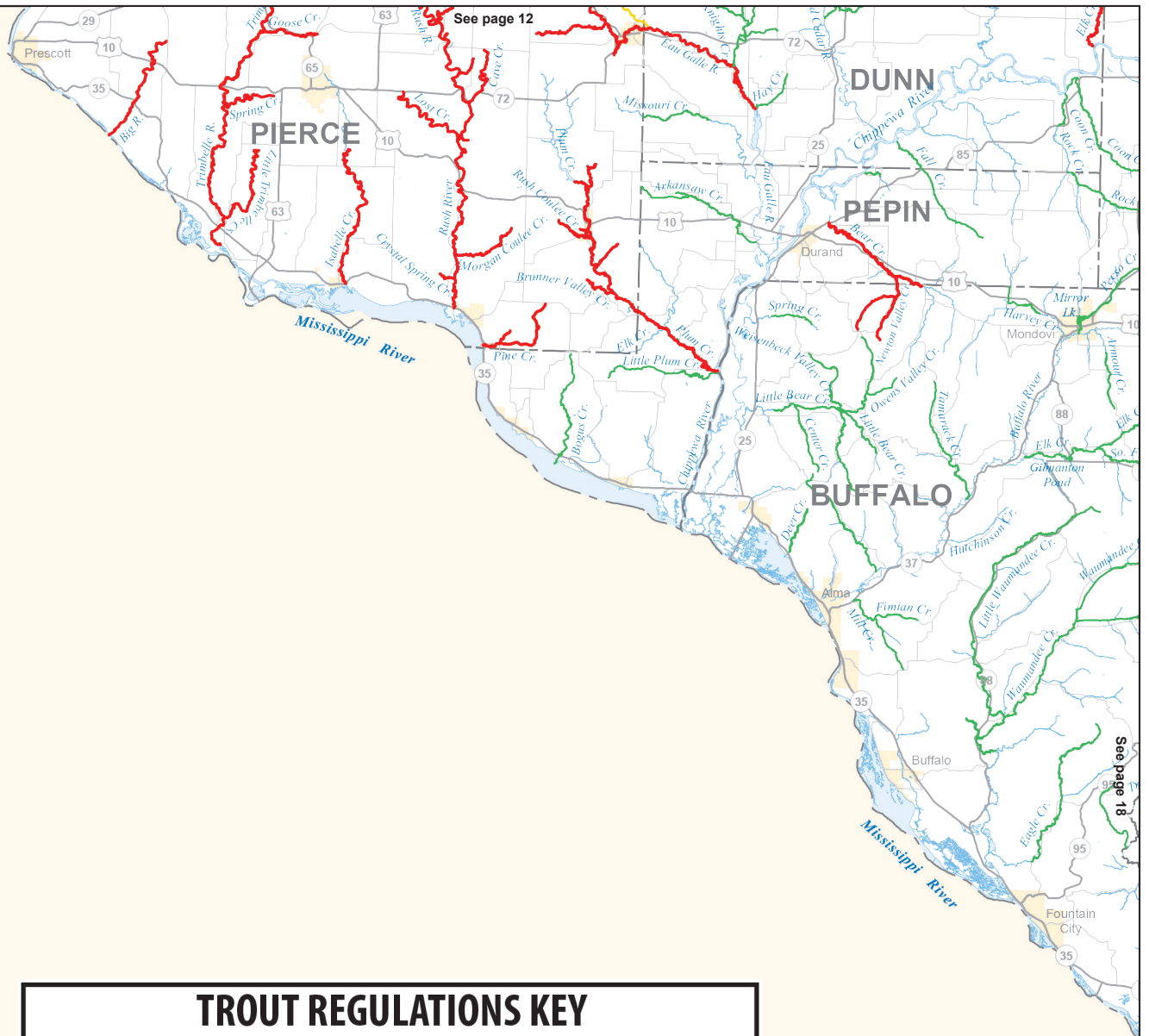




PLEASE NOTE: Maps cannot be used to determine the exact regulations or boundaries between waters. You should always follow the regulations printed in this guide or posted on site.







PLEASE NOTE: Maps cannot be used to determine the exact regulations or boundaries between waters. You should always follow the regulations printed in this guide or posted on site.

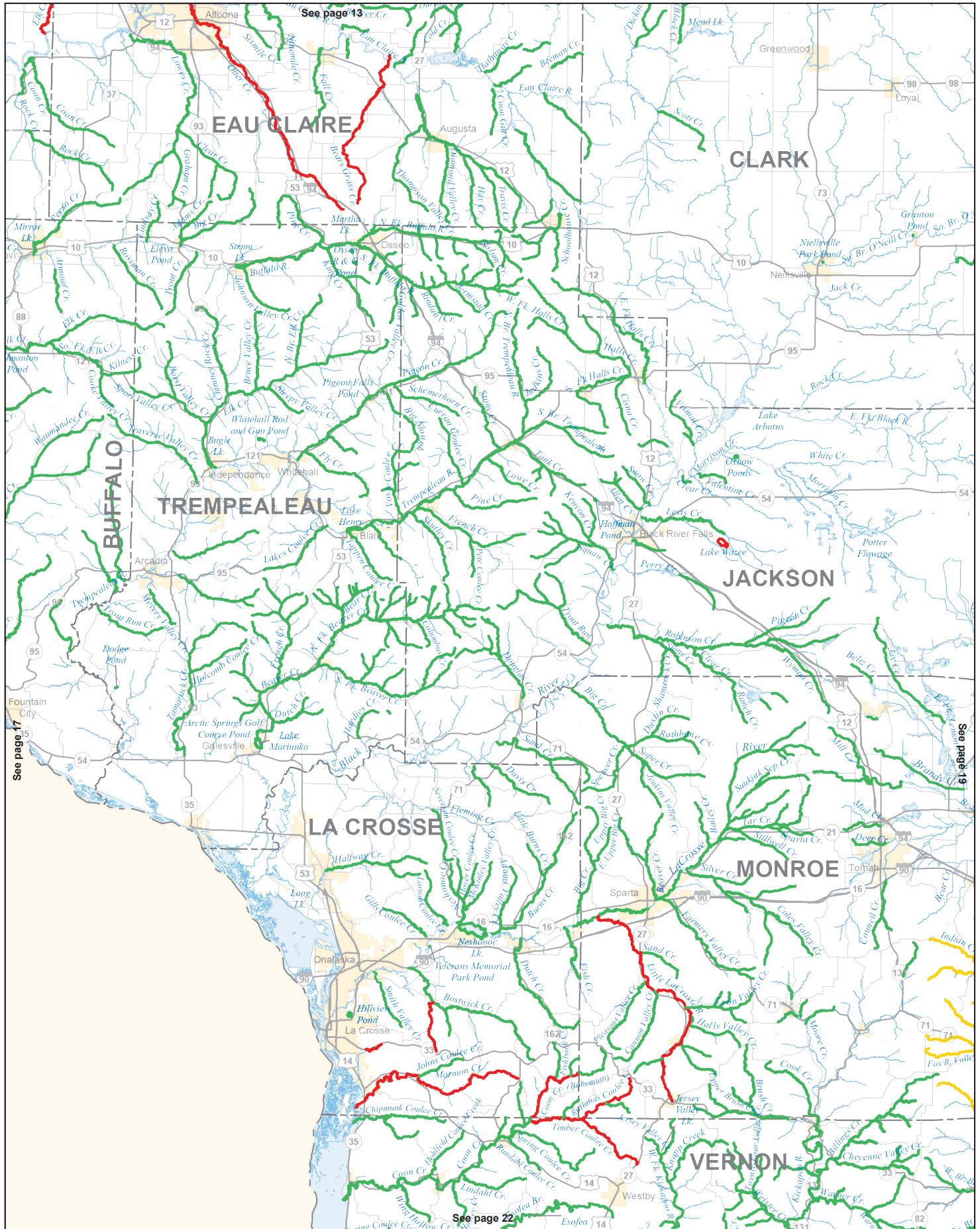


### TROUT REGULATIONS KEY

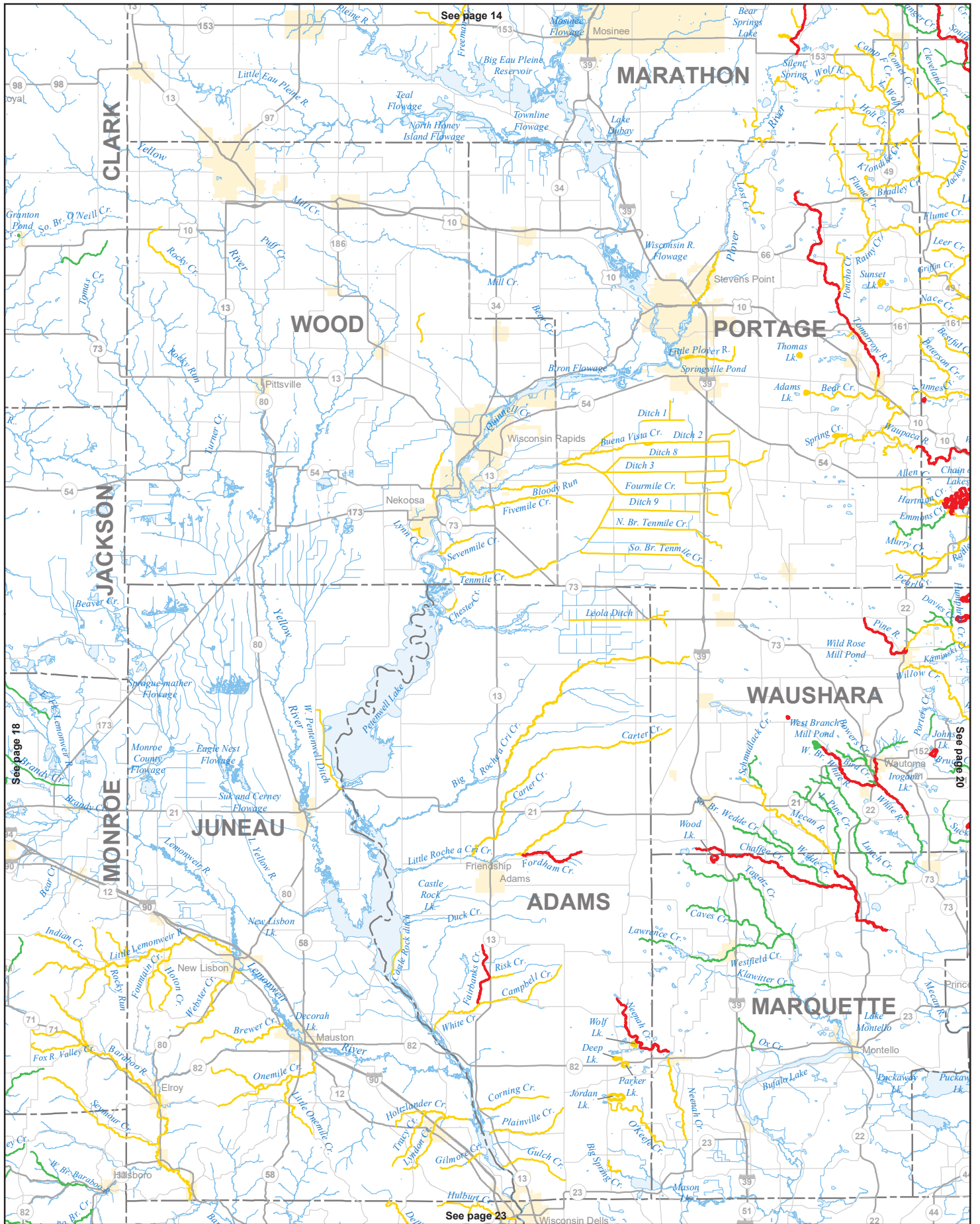
#### Regulations Category

Color	Minimum Length Limit	Daily Bag Limit
	None	5 in total
	8 inches	3 in total
	Special regulations: length and bag limit may vary by water	
	Lake Michigan and Lake Superior tributaries	

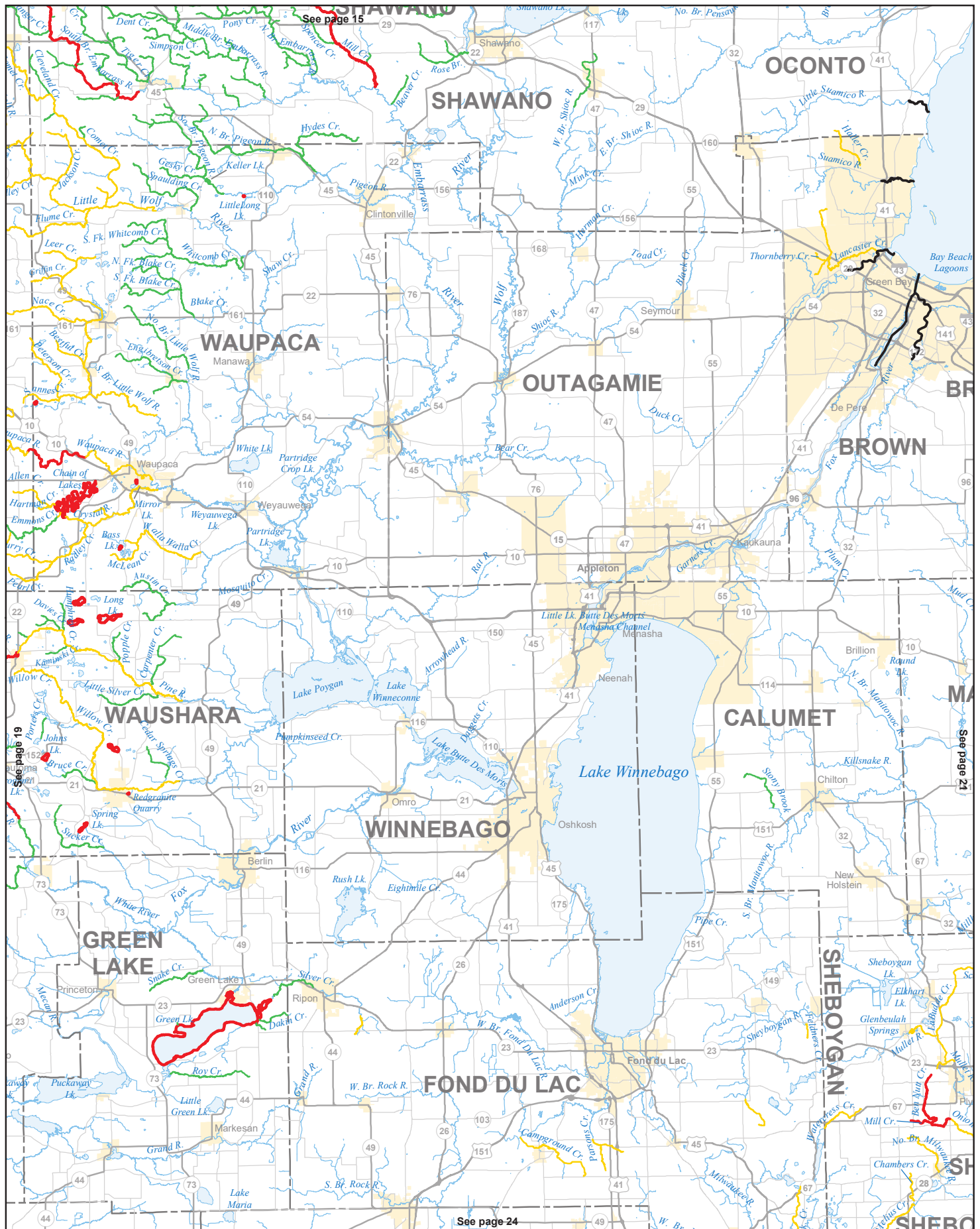
PLEASE NOTE: Maps cannot be used to determine the exact regulations or boundaries between waters. You should always follow the regulations printed in this guide or posted on site.



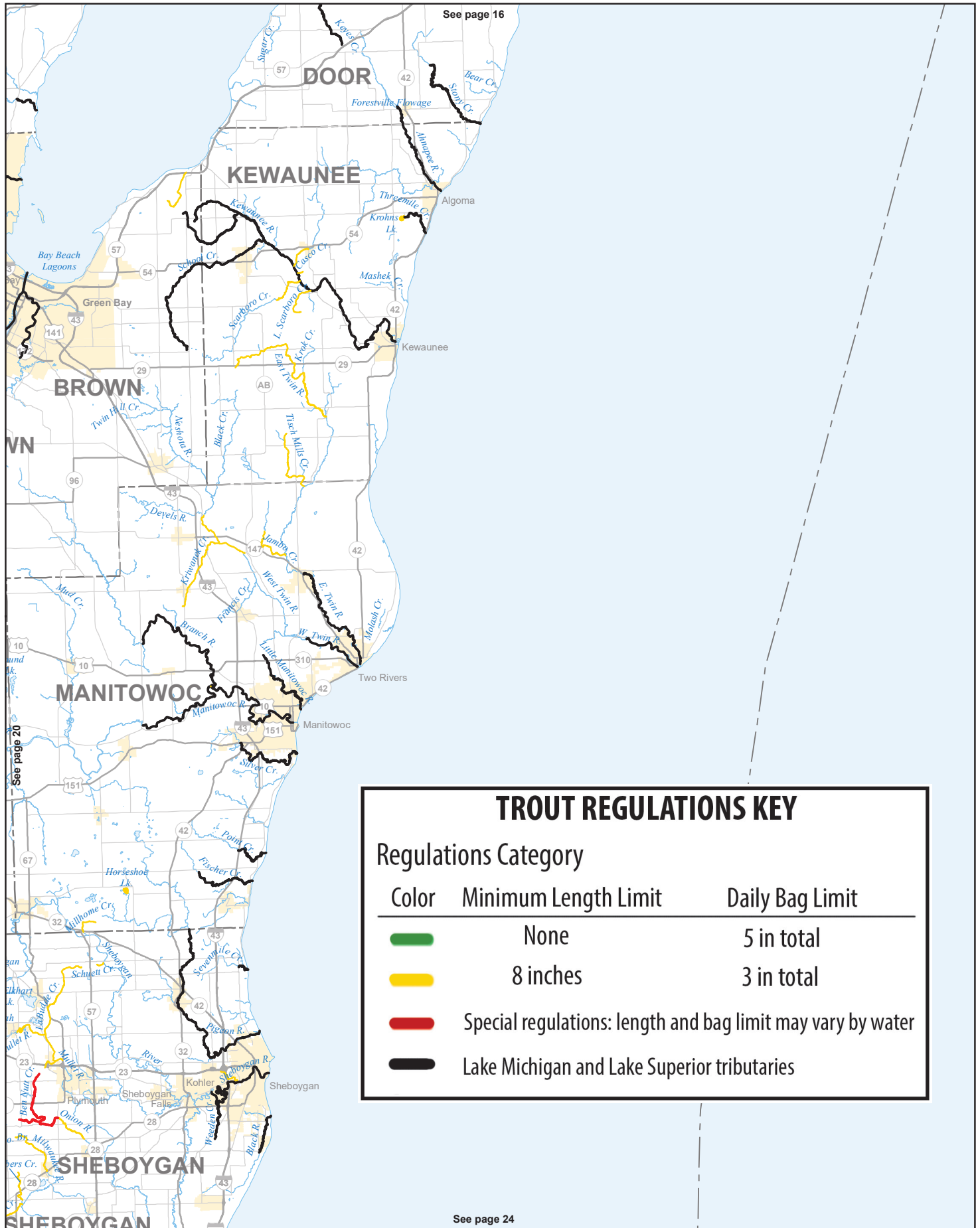
PLEASE NOTE: Maps cannot be used to determine the exact regulations or boundaries between waters. You should always follow the regulations printed in this guide or posted on site.



PLEASE NOTE: Maps cannot be used to determine the exact regulations or boundaries between waters. You should always follow the regulations printed in this guide or posted on site.



PLEASE NOTE: Maps cannot be used to determine the exact regulations or boundaries between waters. You should always follow the regulations printed in this guide or posted on site.

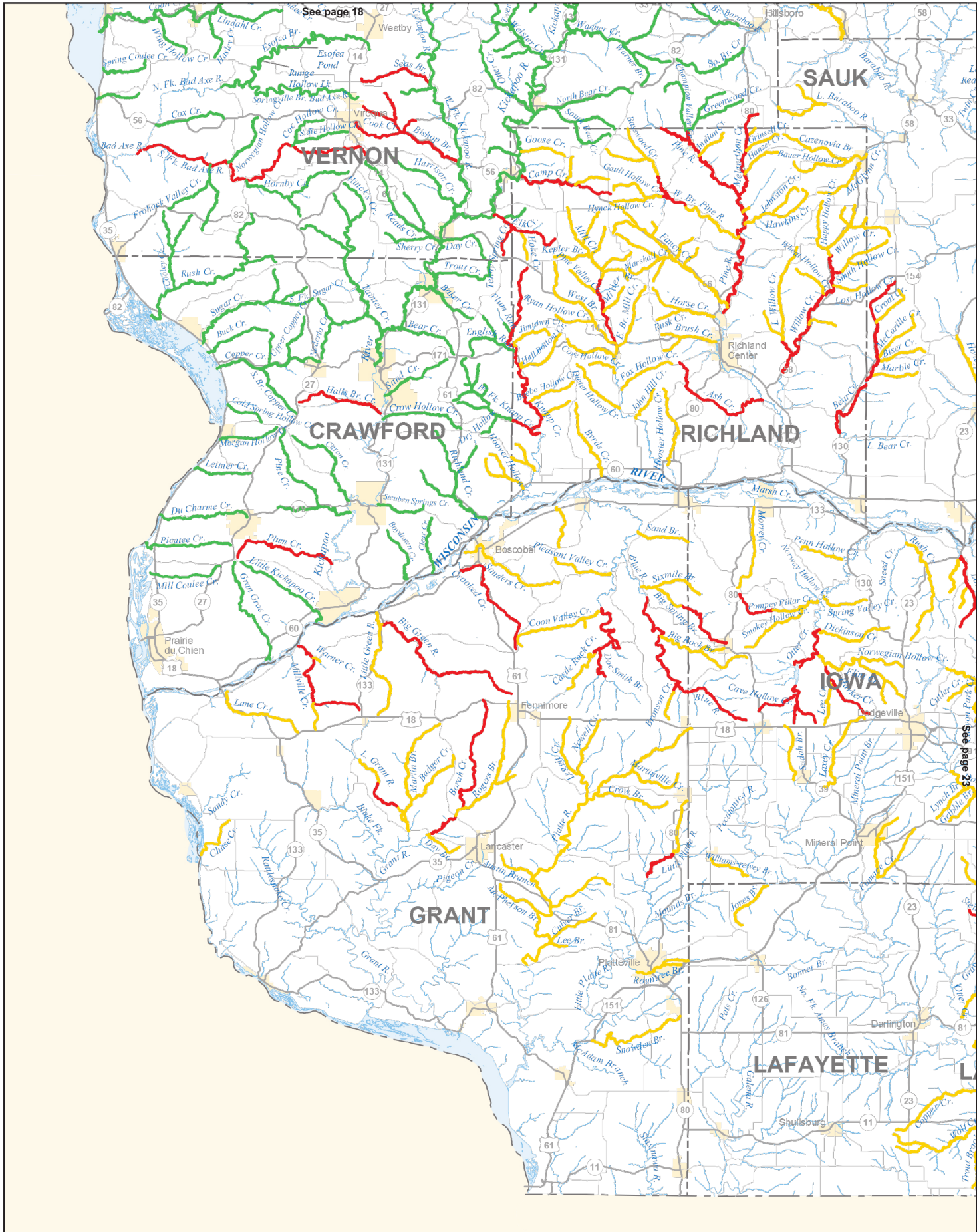


See page 16

See page 20

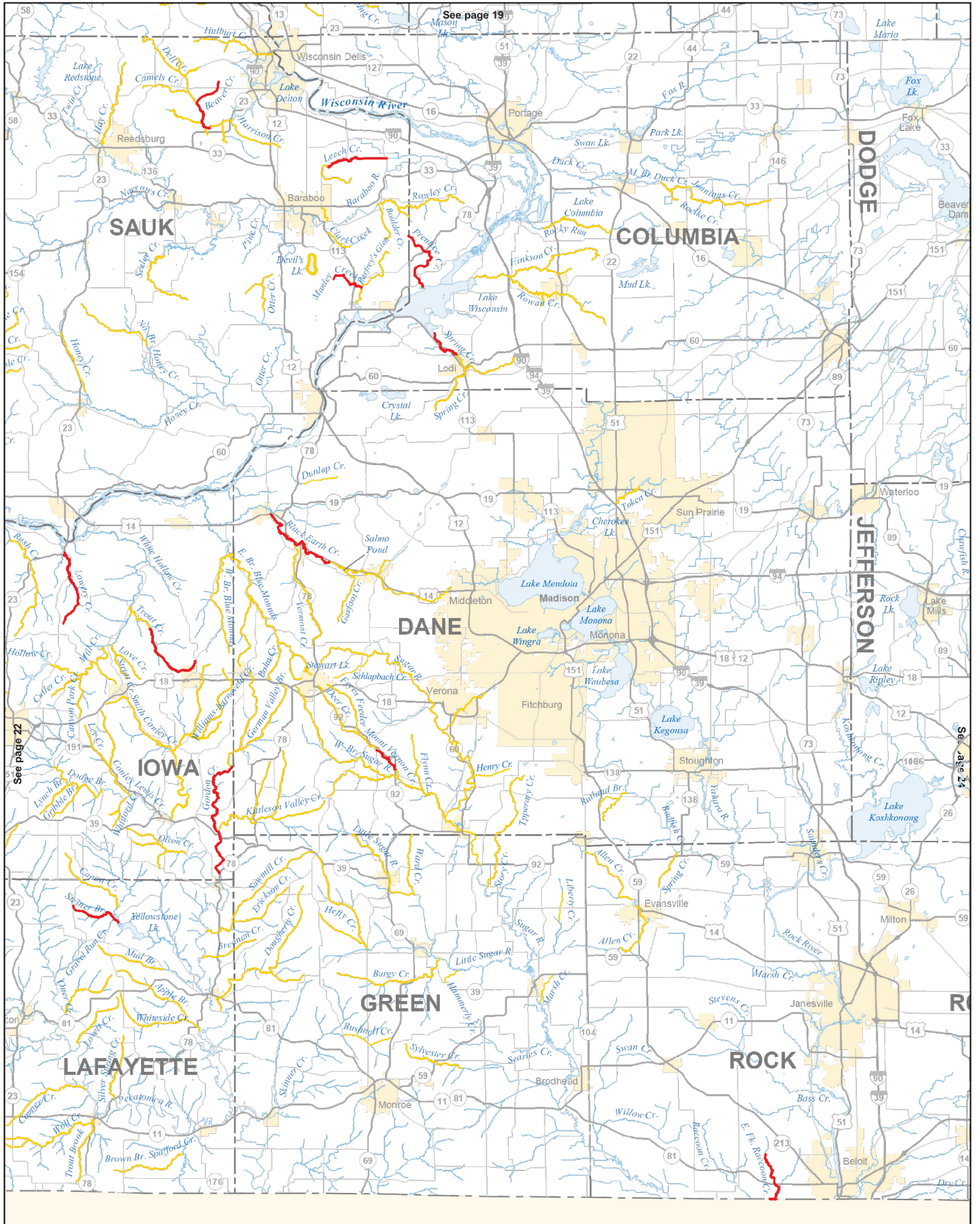
See page 24

PLEASE NOTE: Maps cannot be used to determine the exact regulations or boundaries between waters. You should always follow the regulations printed in this guide or posted on site.

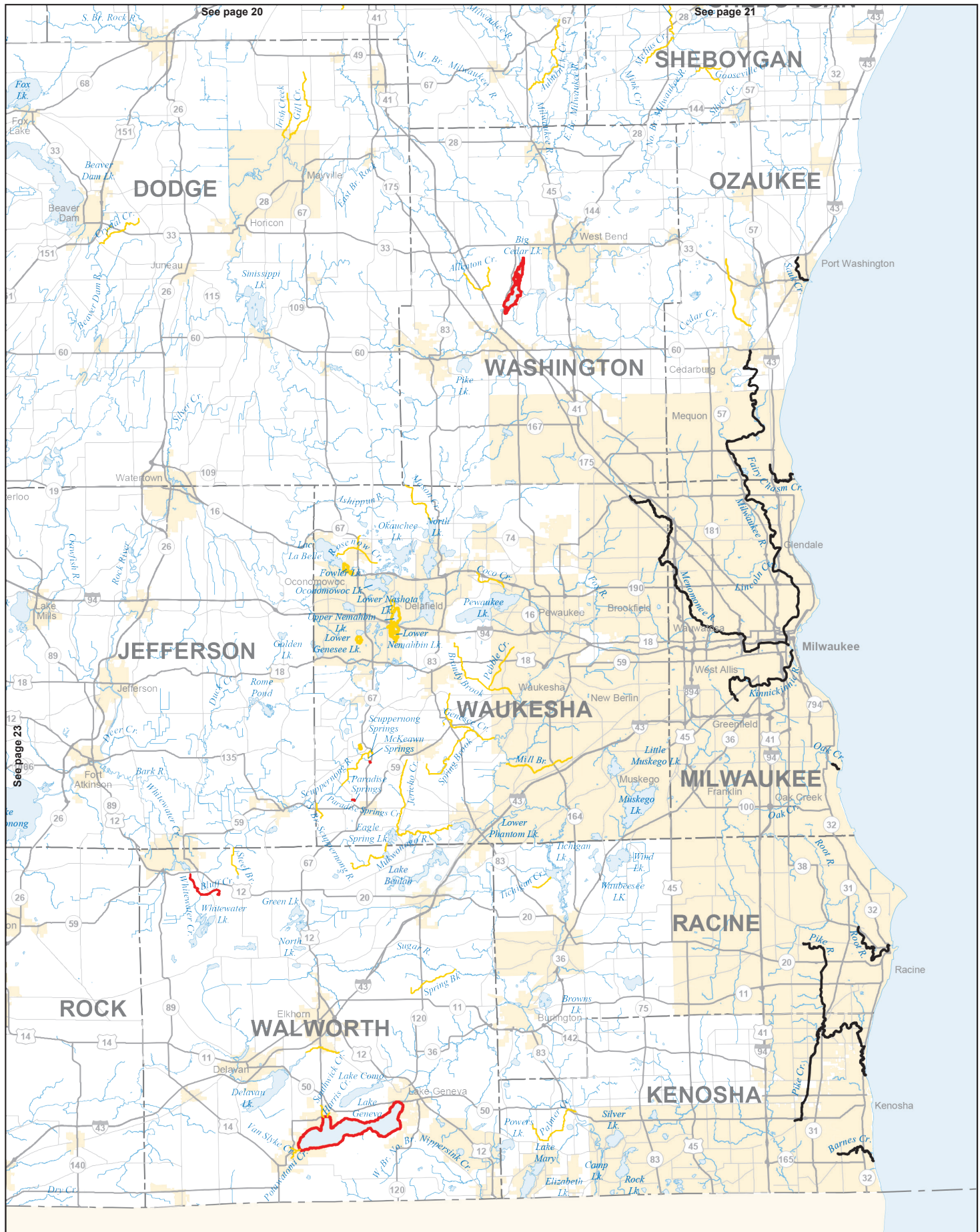


PLEASE NOTE: Maps cannot be used to determine the exact regulations or boundaries between waters. You should always follow the regulations printed in this guide or posted on site.





PLEASE NOTE: Maps cannot be used to determine the exact regulations or boundaries between waters. You should always follow the regulations printed in this guide or posted on site.



PLEASE NOTE: Maps cannot be used to determine the exact regulations or boundaries between waters. You should always follow the regulations printed in this guide or posted on site.

## LANGLADE (continued)

**SPRING LAKE (SPRINGS) AND CREEK** (S17, T31N, R15E)— Yellow

**STARKS SPRINGS**— Yellow

**SUNSHINE SPRINGS**— Yellow

**THOMPSON LAKE (SPRINGS)**— Yellow

**TROUT SPRING**— Yellow

**UNNAMED SPRINGS 2-1 POLAR OR PAGES** (S2, T33N, R11E)— Red

**Daily bag limit and length limit:** 3 in total: brown and rainbow trout over 12"; brook trout over 8"

**UNNAMED SPRINGS 2-14** (S2, T33N, R11E)— Red

**Daily bag limit and length limit:** 3 in total: brown and rainbow trout over 12"; brook trout over 8"

**UNNAMED SPRINGS 3-7 (WEIX)** (S3, T33N, R11E)— Red

**Daily bag limit and length limit:** 3 in total: brown and rainbow trout over 12"; brook trout over 8"

**WILLOW SPRINGS**— Red

**Daily bag limit and length limit:** 3 in total: brown and rainbow trout over 12"; brook trout over 8"

**WOLF RIVER- downstream from CTH T**— Red

**Season:** May 4 at 5 a.m. to Oct. 15

**Daily bag limit and length limit:** 3 in total: brown and rainbow trout under 12", except 1 fish may be over 18"; brook trout over 8"

**Season:** Oct. 16 to Nov. 15 - Red

**Daily bag limit:** all trout caught must be immediately released.

**Gear restriction:** only artificial lures may be used

**WOODDUCK SPRINGS**— Red

**Daily bag limit and length limit:** 3 in total: brown and rainbow trout over 12"; brook trout over 8"

**WOODS FLOWAGE**— Yellow

## LINCOLN

**ALL WATERS NOT LISTED**— Green

**NOTE:** The only lakes in Lincoln County where trout and salmon may be fished after Oct. 15 are: Ament, Henson, Larson, Mirror (kids <16 and certain disabled adults only), Moraine and Tahoe

**BIG CAIN CREEK**— Yellow

**BIG RIB RIVER**— Red

**Daily bag limit:** all trout caught must be immediately released

**Gear restriction:** only artificial lures may be used

**KING SPRING**— Red

**Daily bag limit and length limit:** 3 in total: brown and rainbow trout over 12"; brook trout over 8"

**LITTLE CAIN CREEK**— Yellow

**LITTLE TRAPPE RIVER**— Yellow

**PAYS SPRINGS (ALTA)** (S12, T33N, R7E)— Red

**Daily bag limit and length limit:** 3 in total: brown and rainbow trout over 12"; brook trout over 8"

**PRAIRIE RIVER**— Red

**Daily bag limit and length limit:** 3 in total: brown and rainbow trout over 12"; brook trout over 8"

**PRAIRIE RIVER (NORTH BRANCH)**— Red

**Daily bag limit and length limit:** 3 in total: brown and rainbow trout over 12"; brook trout over 8"

**PROSPECT CREEK**— Yellow

**SPRING CREEK**— Red

**Daily bag limit and length limit:** 3 in total: brown and rainbow trout over 12"; brook trout over 8"

**SPRING LAKE (SPRINGS)** (S16, T32N, R7E)— Red

**Daily bag limit and length limit:** 3 in total: brown and rainbow trout over 12"; brook trout over 8"

**UNNAMED CREEK 12-14** (S35 AND 36, T31N, R4E)— Yellow

## MANITOWOC

**ALL WATERS**— Yellow —For stream flowing into Lake Michigan, see the regulations under Lake Michigan streams on page 2

## MARATHON

**ALL WATERS NOT LISTED**— Yellow

**EAU CLAIRE RIVER (MAIN BRANCH)**— Green

**EMBARRASS RIVER (SOUTH BRANCH)**— Red

**Daily bag limit and length limit:** 3 in total: brown and rainbow trout over 12"; brook trout over 8"

**PLOVER RIVER**— Red

**Daily bag limit and length limit:** 3 in total: brown and rainbow trout over 12"; brook trout over 8"

**SPRANGER CREEK**— Green

**SPRING Brook**— Red

**Daily bag limit and length limit:** 5 in total: brown and rainbow trout no minimum length; only brook trout under 9" may be kept.

## MARINETTE

**ALL WATERS NOT LISTED**— Yellow — For streams flowing into Green Bay, see the regulations under Lake Michigan streams on page 2

**BEAVER CREEK (NORTH BRANCH)**— Red

**Daily bag limit and length limit:** 3 in total: brown and rainbow trout over 12"; brook trout over 8"

**PEMEBONWON RIVER, NORTH BRANCH**— Green

**PESHTIGO RIVER**— Downstream from STH 8 (Forest Co.) to County HWY C (Marinette Co.)

**Season:** May 4 to Oct. 15 —Yellow

**PIKE RIVER (NORTH BRANCH)**— Red

**Daily bag limit and length limit:** 3 in total: brown and rainbow trout over 12"; brook trout over 8"

**PIKE RIVER (SOUTH BRANCH)** from Brock Pond Dam downstream to the confluence with the North Branch Pike River— Green

**RAT RIVER**

**Season:** May 4 to Oct. 15— Yellow

**WALKER CREEK**— Red

**Daily bag limit and length limit:** 3 in total: brown and rainbow trout over 12"; brook trout over 8"

**WAUSAUKEE RIVER**— From the dam in Wausaukee downstream to the confluence with the Menominee River— Green

## MARQUETTE

**ALL WATERS NOT LISTED**— Green

**CHAFFEE CREEK**—Red

**Daily bag limit and length limit:** 3 in total: rainbow trout over 12"; Brown and brook trout over 8"

**MECAN RIVER**—Upstream from 14th Ave— Yellow

**MECAN RIVER**—14th Avenue downstream to Germania marsh barrier— Red

**Daily bag limit and length limit:** 2 trout over 12"

**Gear restriction:** only artificial lures may be used

**NEENAH CREEK (UPPER)**—Upstream from STH 82— Red

**Daily bag limit and length limit:** 2 trout over 12"

**Gear restriction:** only artificial lures may be used

**NEENAH CREEK (LOWER)**—Downstream from STH 82— Yellow

**O'KEEFE CREEK**— Yellow

**WOOD LAKE**— Red

**Daily bag limit and length limit:** 3 trout no minimum length

**Open season:** May 4 at 5 a.m. to March 2, 2025

## MENOMINEE

**ALL WATERS**— Green

Note: Menominee County is a Native American reservation. Review tribal policies at tribal headquarters. State laws apply to non-Native Americans fishing on the Menominee Reservation.

## MILWAUKEE

**ALL WATERS**— Yellow — For streams flowing into Lake Michigan, see the regulations under Lake Michigan streams on page 2

## MONROE

**ALL WATERS NOT LISTED**— Green

**BARABOO RIVER**— Yellow

**BARABOO RIVER TRIBUTARY (10-9)** — Yellow

**FOX RIVER VALLEY CREEK (9-4)** — Yellow

**INDIAN CREEK**— Yellow

**LITTLE LA CROSSE RIVER**— Red

**Daily bag limit and length limit:** 10 trout in total, no minimum length

**LITTLE LEMONWEIR RIVER**— Yellow

**LITTLE LEMONWEIR RIVER TRIBUTARY (13-1)** — Yellow

**LITTLE LEMONWEIR RIVER TRIBUTARY (14-1)** — Yellow

**RULLANDS COULEE**— Red

**Daily bag limit and length limit:** 5 fish under 12"

**ROCKY RUN**— Yellow

**SEYMOUR CREEK**— Yellow

## OCONTO

**ALL WATERS NOT LISTED**— Yellow — For streams flowing into Green Bay, see the regulations under Lake Michigan streams on page 2

**OCONTO RIVER (SOUTH BRANCH)**— Menominee County downstream to STH 32— Red

**Daily bag limit and length limit:** 2 trout over 12"

**Gear restriction:** only artificial lures may be used

## ONEIDA

**ALL WATERS NOT LISTED**— Green

**BEARSKIN CREEK**— Yellow

**BIG CARR LAKE**— Red

**Daily bag limit and length limit:** 1 lake trout over 30", other trout Green

**Season:** lake trout — May 4 at 5 a.m. to Sept. 30; other trout: May 4 at 5 a.m. to March 2, 2025

**DOROTHY LAKE**— Red

**Daily bag limit and length limit:** 3 trout, no minimum length

**Open season:** May 4 at 5 a.m. to March 2, 2025

**HAWK LAKE**— Red

**Daily bag limit and length limit:** 3 trout, no minimum length

**Open season:** May 4 at 5 a.m. to March 2, 2025

**LITTLE BASS LAKE (S15, T39N, R7E)**— Red

**Daily bag limit and length limit:** 3 trout, no minimum length

**Open season:** May 4 at 5 a.m. to March 2, 2025

**LITTLE PINE CREEK**— Yellow

**MERCER SPRINGS**— Red

**Daily bag limit and length limit:** 3 trout, no minimum length

**NOISY CREEK**— Yellow

**PERCH LAKE (S2, T36N, R7E)**— Red

**Daily bag limit and length limit:** 3 trout, no minimum length

**Open season:** May 4 at 5 a.m. to March 2, 2025

**TROUT CREEK**— Yellow

**WOODBORO SPRINGS (headwaters of Trout Creek)**— Yellow

## OUTAGAMIE

**ALL WATERS**— Green

## OZAUKEE

**ALL WATERS**— Yellow —For streams flowing into Lake Michigan, see the regulations under Lake Michigan streams on page 2

## PEPIN

**ALL WATERS NOT LISTED**— Green

**BEAR CREEK**— Red

**Daily bag limit and length limit:** 3 in total: brown and rainbow trout over 12"; brook trout over 8"

**PLUM CREEK**— Red

**Daily bag limit and length limit:** 3 in total: brown and rainbow trout over 12"; brook trout over 8"

## PIERCE

**ALL WATERS NOT LISTED**— Red

**Daily bag limit and length limit:** 3 in total: brown and rainbow trout over 12"; brook trout over 8"

**CADY CREEK**— Red

**Daily bag limit and length limit:** 5 trout in total: all brook trout caught must be immediately released; brown trout and rainbow trout no minimum length

**GEORGE LAKE (SPRING VALLEY FLOWAGE)** — Green

**KINNICKINNIC RIVER AND ITS TRIBUTARIES (2-16, 8-11, 8-13, 9-15a, 9-15b, 24-11, 14-15, Rocky Brook, South Fork Kinnickinnic River)**— Red

**Daily bag limit and length limit:** 5 fish under 12"

**NORTH PINE CREEK**— Red

**Daily bag limit and length limit:** 5 trout in total: all brook trout caught must be immediately released; brown trout and rainbow trout no minimum length

**PINE CREEK**— Red

**Daily bag limit and length limit:** 5 trout in total: all brook trout caught must be immediately released; brown trout and rainbow trout no minimum length

## POLK

**ALL WATERS**— Green

## PORTAGE

**ALL WATERS NOT LISTED**— Yellow

**NOTE:** The only lakes in Portage County where trout and salmon may be fished after Oct. 15 are: Adams, Thomas, Sunset, Spring and Springville Pond.

**EMMONS CREEK**— Green

**SPRINGVILLE POND** — Yellow

**Open season:** May 4 at 5 a.m. to March 2, 2025

**TOMORROW (WAUPACA) RIVER**—Durant Rd. downstream to River Road in Waupaca County— Red

**Daily bag limit and length limit:** 1 over 18"

**Gear restriction:** only artificial lures may be used

**TOMORROW (WAUPACA) RIVER**—Amherst Dam upstream to Clementson Road— Red

**Daily bag limit and length limit:** 2 over 12"

**Gear restriction:** only artificial lures may be used

**TOMORROW (WAUPACA) RIVER (UPPER)**—Upstream from Clementson Road— Red

**Daily bag limit and length limit:** 3 in total: brown and rainbow trout over 12"; brook trout over 8"

## PRICE

**ALL WATERS NOT LISTED**— Green

**FOULDS SPRINGS**— Yellow

**PRICE CREEK**—Upstream to CTHW— Yellow

## RAGINE

**ALL WATERS NOT LISTED**— Yellow —For streams flowing into Lake Michigan, see the regulations under Lake Michigan streams on page 2

## RICHLAND

**ALL WATERS NOT LISTED**— Yellow

**ASH CREEK**—Upstream from CTH TB— Red

**Daily bag limit and length limit:** 5 trout in total: all brook trout caught must be immediately released; brown trout and rainbow trout no minimum length.

**Gear restriction:** only artificial lures may be used.

**BEAR CREEK**—Upstream from STH 130(T9N, R2E, Sec. 14, NWSW)— Red

**Daily bag limit and length limit:** 2 over 12"

**CAMP CREEK**— Red

**Daily bag limit and length limit:** 5 under 12"

**CHADWICK HOLLOW CREEK**— Green

**CHAMPION VALLEY CREEK**—Downstream from CTH H— Red

**Daily bag limit and length limit:** 2 over 12"

**CHAMPION VALLEY CREEK**—upstream from CTH "H" — Green

**ELK CREEK**— Red

**Daily bag limit and length limit:** 5 under 12"

**ENGLISH RUN**— Green

**GAULT HOLLOW CREEK**—Downstream from CTH H— Red

**Daily bag limit:** all trout caught must be immediately released.

**GREENWOOD VALLEY CREEK**— Green

**KICKAPOO RIVER**— Green

**KNAPP CREEK**—Upstream from STH 171— Red

**Daily bag limit and length limit:** 5 under 12"

**KNAPP CREEK**—Upstream from CTH F at Excelsior to STH 171 — Red

**Daily bag limit and length limit:** 2 over 12"

**LITTLE WILLOW CREEK**—Downstream from Spiral Road— Red

**Daily bag limit and length limit:** 2 over 12"

**MELANCTHON CREEK** — Red

**Daily bag limit and length limit:** 5 trout in total: all brook trout caught must be immediately released; brown trout and rainbow trout no minimum length.

**MILL CREEK**—USH 14 upstream to Quarry Hill Road— Red

**Daily bag limit and length limit:** 5 under 12"

**PINE RIVER**—upstream from CTH AA — Red

**Daily bag limit and length limit:** 2 over 12"

**SOUTH BEAR CREEK**— Green

**WEST BRANCH PINE RIVER**—Old County Farm Dr. upstream to Spangler Ridge Rd- Red

**Daily bag limit:** all trout caught must be immediately released.

**WEST FORK KNAPP CREEK** Upstream to Spring Road (Richland / Crawford County Line) — Red

**Daily bag limit and length limit:** 2 over 12"

**WILLOW CREEK**—STH 58 bridge 2.75 miles south of Ithaca upstream to Lost Hollow Road— Red

**Daily bag limit and length limit:** 2 over 12"

**WILLOW CREEK**—Lost Hollow Road upstream to STH 58 bridge 0.25 mile north of Loyd— Red

**Daily bag limit and length limit:** 5 under 12"

## ROCK

**ALL WATERS NOT LISTED**— Yellow

**EAST BRANCH RACCOON CREEK** — Cleophus Road (T11N, R11E, Sec. 13) downstream to the State Line -- Red

**Daily bag limit:** all trout caught must be immediately released

**Gear restriction:** only artificial lures may be used

## RUSK

**ALL WATERS NOT LISTED**— Green

**BASS L (WEYERHAEUSER)**— Red

**Daily bag limit and length limit:** 1 trout over 14"

**Open season:** May 4 at 5 a.m. to March 2, 2025

**BIG WEIRGOR CREEK**— Yellow

**LITTLE WEIR GOR CREEK**— Yellow

**MAIN CREEK (SOUTH FORK)** — Yellow

## SAUK

**ALL WATERS NOT LISTED**— Yellow

**BEAR CREEK**— Red

**Daily bag limit and length limit:** 2 over 12"

**BEAVER CREEK**— Red

**Daily bag limit and length limit:** 5 trout in total: all brook trout caught must be immediately released; brown trout and rainbow trout no minimum length

**Gear restriction:** only artificial lures may be used

**DELL CREEK**—Coon Bluff Rd upstream to South Avenue-- Red

**Daily bag limit and length limit:** 5 trout in total: all brook trout caught must be immediately released; brown trout and rainbow trout no minimum length

**Gear restriction:** only artificial lures may be used

**LEECH CREEK**— between CTH T and CTH U — Red

**Daily bag limit and length limit:** 2 over 12"

**MANLEY CREEK**— Red

**Daily bag limit and length limit:** 5 in total: brown and rainbow trout no length limit; brook trout under 9"

## SAWYER

**ALL WATERS NOT LISTED**— Yellow

**BADGER CREEK**— Green

**BEAN Brook**— Green

**BEAVER CREEK**— Green

**BUCKHORN CREEK AND SPRINGS**— Green

**CAMP SMITH LAKE**— Red

**Daily bag limit and length limit:** 3 in total: brown and rainbow trout over 12"; brook trout over 8"

**Open season:** May 4 at 5 a.m. to March 2, 2025

**CHIMPANAZIE CREEK**— Green

**DEER CREEK (METEOR TOWNSHIP)**— Green

**FIDDLER CREEK**— Red

**Daily bag limit:** all trout caught must be immediately released

**Gear restriction:** only artificial lures may be used

**FORTY-ONE CREEK**— Green

**HACKETT CREEK**— Green

**HATCHERY CREEK**— Green

**HAUER CREEK AND SPRINGS**— Red

**Daily bag limit and length limit:** 1 trout over 14"

**Gear restriction:** only artificial lures may be used

**MAPLE CREEK AND SPRINGS**— Green

**NAMEKAGON RIVER**—County E bridge (Washburn) upstream to Lake Namekagon Dam— Red

**Daily bag limit and length limit:** 1 trout over 14"

**Gear restriction:** only artificial lures may be used

**PIPESTONE CREEK**— Green

**STRESS SPRINGS**— Red

**Daily bag limit:** all trout caught must be immediately released

**Gear restriction:** only artificial lures may be used

**THIRTY-THREE CREEK**— Green

**SHAWANO**

**ALL WATERS NOT LISTED**— Green

**BAHR LAKE**— Red

**Daily bag limit and length limit:** 3 fish in total, no minimum length

**Open season:** May 4 at 5 a.m. to March 2, 2025

**COMET CREEK**— Yellow

**EMBARRASS RIVER (SOUTH BRANCH)**—Upstream from Tigerton Dam— Red

**Daily bag limit and length limit:** 3 in total: brown and rainbow trout over 12"; brook trout over 8"

**HOMME POND**— Red

**Daily bag limit and length limit:** 3 fish in total, no minimum length

**JACKSON CREEK**— Yellow

**KORTH LAKE**— Red

**Daily bag limit and length limit:** 3 fish in total, no minimum length

**Season:** May 4 at 5 a.m. to March 2, 2025

**MILL CREEK**— Red

**Daily bag limit and length limit:** 3 in total: brown and rainbow trout over 12"; brook trout over 8"

**OCONTO RIVER**— Yellow

**SHEBOYGAN**

**ALL WATERS NOT LISTED**— Yellow —For streams flowing into Lake Michigan, see the regulations under Lake Michigan streams on page 2

**BEN NUTT CREEK**— Red

**Daily bag limit and length limit:** 2 over 12"

**Gear restriction:** only artificial lures may be used

**MILL CREEK**— Red

**Daily bag limit and length limit:** 2 over 12"

**Gear restriction:** only artificial lures may be used

**ONION RIVER**—Upstream from CTH E— Red

**Daily bag limit and length limit:** 2 over 12"

**Gear restriction:** only artificial lures may be used

**ST. CROIX**

**ALL WATERS NOT LISTED**— Green

**CADY CREEK**— Red

**Daily bag limit and length limit:** 5 trout in total: all brook trout caught must be immediately released; brown trout and rainbow trout no minimum length

**KINNICKINNIC RIVER AND TRIBUTARIES** (21-4, 30-1, 30-10, 36-1, 36-15, Kelly Creek, Nye Creek, Parker Creek, 13-2, Ted Creek)— Red

**Daily bag limit and length limit:** 5 fish under 12"

**RUSH RIVER AND TRIBUTARIES (35-9)**— Red

**Daily bag limit and length limit:** 3 in total: brown and rainbow trout over 12"; brook trout over 8"

**WILLOW RIVER**—From Lake Mallalieu Dam upstream to Little Falls Flowage Dam— Red

**Daily bag limit and length limit:** 1 fish over 14"

**WILLOW RIVER (RACE)**— Red

**Daily bag limit and length limit:** 1 fish over 14"

**TAYLOR**

**ALL WATERS NOT LISTED**— Green

**BIG RIB RIVER**—CTH C downstream to STH 64— Yellow

**BIG RIB RIVER**—Downstream from STH 64— Red

**Daily bag limit:** all trout caught must be immediately released

**Gear restriction:** only artificial lures may be used

**BLACK CREEK**— Yellow

**WOOD CREEK**— Yellow

**TREMPEALEAU**

**ALL WATERS**— Green

**VERNON**

**ALL WATERS NOT LISTED**— Green

**BAD AXE RIVER, SOUTH FORK**— Red

**Daily bag limit and length limit:** 10 trout in total, no minimum length

**BISHOP BRANCH AND TRIBUTARIES** (Cook Creek, Maple Dale Creek, Pine Hollow Creek and Bishops Branch Tributary)— Red

**Daily bag limit and length limit:** all brook trout caught must be immediately released, 5 brown and rainbow trout, no minimum length

**ELK CREEK**— Red

**Daily bag limit and length limit:** 5 fish under 12"

**LITTLE BARABOO RIVER**—Downstream of HWY EE — Yellow

**MELANCTHON CREEK**— Red

**Daily bag limit and length limit:** all brook trout caught must be immediately released, 5 brown and rainbow trout, no minimum length

**RULLANDS COULEE**— Red

**Daily bag limit and length limit:** 5 fish under 12"

**SEAS BRANCH CREEK**— Red

**Daily bag limit and length limit:** all brook trout caught must be immediately released, 5 brown and rainbow trout, no minimum length

**TENNEY SPRINGS CREEK**— Red

**Daily bag limit and length limit:** 5 trout in total: all brook trout caught must be immediately released; brown trout and rainbow trout no minimum length

**TIMBER COULEE CREEK**— Red

**Daily bag limit:** all trout caught must be immediately released

**UNNAMED CREEK 18-13**— Red

**Daily bag limit and length limit:** all brook trout caught must be immediately released, 5 brown and rainbow trout, no minimum length

**VILAS**

**ALL WATERS NOT LISTED**— Green

**BLACK OAK LAKE**— Red

**Daily bag limit and length limit:** 1 lake trout over 30", other trout— Green

**Season:** lake trout – May 4 at 5 a.m. to Sept. 30; other trout – May 4 at 5 a.m. to March 2, 2025

**BRULE CREEK**— Red

**Daily bag limit and length limit:** 3 trout over 10"

**DEERSKIN RIVER**— Yellow**ELVOY CREEK**— Red

**Daily bag limit and length limit:** 3 trout over 10"

**FALLISON LAKE**— Yellow

**Season:** May 4 at 5 a.m. to March 2, 2025

**FENCE LAKE**— Red

**Daily bag limit and length limit:** 2 fish over 12"

**Season:** May 4 at 5 a.m. to March 2, 2025

**LITTLE DEERSKIN RIVER**— Yellow**LITTLE TAMARACK CREEK**— Yellow**LITTLE TROUT LAKE**— Red

**Daily bag limit and length limit:** 1 lake trout over 30", other trout – Green

**Season:** lake trout – May 4 at 5 a.m. to Sept. 30; other trout – May 4 at 5 a.m. to March 2, 2025

**LONG LAKE**— Red

**Daily bag limit and length limit:** 1 lake trout over 30", other trout – Green

**Season:** lake trout – May 4 at 5 a.m. to Sept. 30; other trout – May 4 at 5 a.m. to March 2, 2025

**MILITARY CREEK**— Yellow**MISHONAGON CREEK**— Yellow**NORTH CREEK & SPRINGS**— Yellow**PALLETTE LAKE**— No open season — Red**PLUM CREEK**— Yellow**SIPHON CREEK & SPRINGS** — Yellow**STORMY LAKE**— Red

**Daily bag limit and length limit:** 2 fish over 12"

**Season:** May 4 at 5 a.m. to March 2, 2025

**TROUT LAKE**— Red

**Daily bag limit and length limit:** 1 lake trout over 30", other trout Green

**Season:** lake trout – May 4 at 5 a.m. to Sept. 30; other trout – May 4 at 5 a.m. to March 2, 2025

**TAMARACK CREEK**— Yellow**WHITE SAND LAKE** (T42N R07E S26 Near Boulder Junction) — Red

**Daily bag limit and length limit:** 1 lake trout over 30", other trout— Green

**Season:** lake trout – May 4 at 5 a.m. to Sept. 30; other trout— May 4 at 5 a.m. to March 2, 2025

**WILDWOOD LAKE**— Red

**Daily bag limit and length limit:** 2 fish over 12"

**Season:** May 4 at 5 a.m. to March 2, 2025

**WALWORTH****ALL WATERS NOT LISTED**— Yellow

**BLUFF CREEK**—from terminus with Whitewater Creek west of highway P to headwaters east of highway P— Red

**Daily bag limit and length limit:** 2 fish over 12"

**LAKE GENEVA**— Red

**Daily bag limit and length limit:** 2 lake trout over 17", other trout – Yellow

**Season:** lake trout— Jan. 6 to Sept. 30; other trout— May 4 at 5 a.m. to March 2, 2025

**WHITEWATER CREEK**—from Willis Ray Road to terminus with Bluff Creek west of highway P— Red

**Daily bag limit and length limit:** 2 fish over 12"

**WASHBURN****ALL WATERS NOT LISTED**— Green**BRILL RIVER**— Red

**Daily bag limit and length limit:** 2 fish over 12"

**NAMEKAGON RIVER**—County E bridge (Washburn Co.) upstream to Lake Namekagon Dam— Red

**Daily bag limit and length limit:** 1 trout over 14"

**Gear restriction:** only artificial lures may be used

**WASHINGTON****ALL WATERS**— Yellow**BIG CEDAR LAKE**— Red

**Daily bag limit and length limit:** 2 lake trout over 17", other trout – Yellow

**Season:** lake trout— Jan. 6 to Sept. 30; other trout – May 4 at 5 a.m. to March 2, 2025

**WAUKESHA****ALL WATERS NOT LISTED**— Yellow

**MCKEAWN SPRINGS**—Outlet of Pond upstream to HWY 67 — Red

**Daily bag limit:** all trout caught must be immediately released

**Gear restriction:** only artificial lures may be used

**Season:** Continuous open season

**PARADISE SPRINGS & CREEK**—Upstream from CTH N— Red

**Daily bag limit:** all trout caught must be immediately released

**Gear restriction:** only artificial lures may be used

**Season:** Continuous open season

**WAUPAGA****ALL WATERS NOT LISTED**— Green**ALLEN CREEK**— Yellow**BASS LAKE**— Red

**Daily bag limit and length limit:** 3 trout, no minimum length

**Season:** May 4 at 5 a.m. to March 2, 2025

**BESTUL CREEK**— Yellow**CHAIN OF LAKES (ALL LAKES)**— Red

**Daily bag limit and length limit:** 2 fish over 12"

**Season:** May 4 at 5 a.m. to March 2, 2025

**COMET CREEK**— Yellow**CRYSTAL RIVER**— Yellow**FLUME CREEK**— Yellow**GRIFFIN CREEK**— Yellow**HARTMAN CREEK**— Yellow**JACKSON CREEK**— Yellow**JONES CREEK**— Yellow**LEER CREEK**— Yellow**LITTLE LONG LAKE**— Red

**Daily bag limit and length limit:** 3 trout, no minimum length

**Season:** May 4 at 5 a.m. to March 2, 2025

**LITTLE WOLF RIVER**— Yellow**LITTLE WOLF RIVER (SOUTH BRANCH)**— Yellow**MACK (Brown) CREEK**— Yellow**MCLEAN CREEK**— Yellow**MIRROR LAKE**— Red

**Daily bag limit and length limit:** 3 trout, no minimum length

**Season:** May 4 at 5 a.m. to March 2, 2025

**MURRAY CREEK**— Yellow**NACE CREEK**— Yellow**NAYLOR CREEK**— Yellow**OLSON CREEK**— Yellow

PEARL CREEK— Yellow  
 PETERSON CREEK— Yellow  
 RADLEY CREEK— Yellow  
 SANNES CREEK— Yellow  
 SKUNK LAKE— Red  
**Daily bag limit and length limit:** 3 trout, no minimum length  
**Season:** May 4 at 5 a.m. to March 2, 2025  
 WALLA WALLA CREEK— Yellow  
 WAUPACA (TOMORROW) RIVER—River Road upstream to Durant Road in Portage County— Red  
**Daily bag limit and length limit:** 1 over 18"  
**Gear restriction:** only artificial lures may be used  
 WAUPACA (TOMORROW) RIVER—All except portion listed above— Yellow

SPRING LAKE— Red  
**Daily bag limit and length limit:** 3 trout, no minimum length  
**Season:** May 4 at 5 a.m. to March 2, 2025  
 WHITE RIVER (MAIN BRANCH)— Lower Millpond Dam (CTY RD YY) upstream to State HWY 21 and 73— Red  
**Daily bag limit and length limit:** 2 over 12"  
**Gear restriction:** only artificial lures may be used  
 WHITE RIVER (WEST BRANCH)—Red  
**Daily bag limit and length limit:** 3 in total: rainbow trout over 12"; Brown and brook trout over 8"  
 WILD ROSE MILLPOND— from HWY 22 Upstream to CTY Rd AA— Red  
**Daily bag limit and length limit:** 3 trout, no minimum length  
**Season:** May 4 at 5 a.m. to March 2, 2025  
 WILLOW CREEK— Yellow

## WAUSHARA

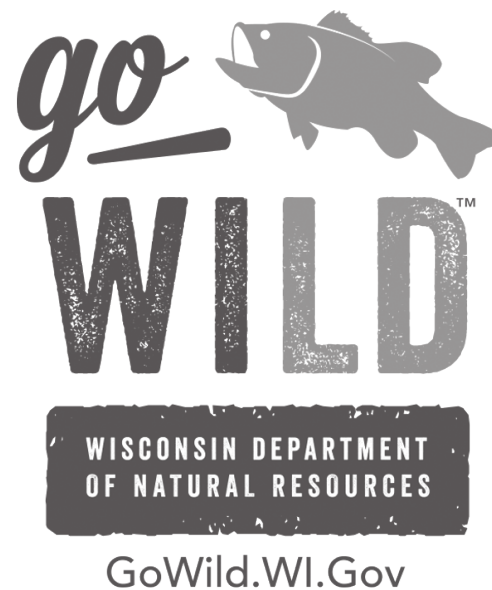
ALL WATERS NOT LISTED— Green  
 BIG ROCHE A CRI CREEK— Yellow  
 CARTER CREEK— Yellow  
 CHAFFEE CREEK—Red  
**Daily bag limit and length limit:** 3 in total: rainbow trout over 12"; brown and brook trout over 8"  
 GILBERT LAKE— Red  
**Daily bag limit and length limit:** 3 trout, no minimum length  
**Season:** May 4 at 5 a.m. to March 2, 2025  
 JOHNS LAKE— Red  
**Daily bag limit and length limit:** 3 trout, no minimum length  
**Season:** May 4 at 5 a.m. to March 2, 2025  
 LEOLA DITCH— Yellow  
 LONG LAKE (TOWN OF SAXEVILLE)— Red  
**Daily bag limit and length limit:** 3 trout, no minimum length  
**Season:** May 4 at 5 a.m. to March 2, 2025  
 LYMAN (HARTFORD) LAKE — Red  
**Daily bag limit and length limit:** 3 trout, no minimum length  
**Season:** May 4 at 5 a.m. to March 2, 2025  
 MECAN RIVER & SPRINGS— Yellow  
 PEARL LAKE— Red  
**Daily bag limit and length limit:** 3 trout, no minimum length  
**Season:** May 4 at 5 a.m. to March 2, 2025  
 PINE LAKE— Red  
**Daily bag limit and length limit:** 3 trout, no minimum length  
**Season:** May 4 at 5 a.m. to March 2, 2025  
 PINE RIVER (LOWER)—HWY 22 downstream from Wild Rose Mill Dam— Yellow  
 PINE RIVER (UPPER)—Upstream from CTH AA— Red  
**Daily bag limit and length limit:** 3 trout, no minimum length  
 REDGRANITE QUARRY— Red  
**Daily bag limit and length limit:** 3 trout, no minimum length  
**Season:** May 4 at 5 a.m. to March 2, 2025

## WINNEBAGO

ALL WATERS— Green

## WOOD

ALL WATERS— Yellow



## STOP AQUATIC HITCHHIKERS!™

Prevent the transport of nuisance species.  
 Clean ALL recreational equipment.

Aquatic invasive species are nonnative plants, animals and pathogens that harm our environment and our economy. Wading anglers are reminded to do their part to help stop aquatic hitchhikers this fishing season. When moving between streams, anglers need to remove all plants, animals and debris from gear, and to drain all water from equipment. A stiff brush to scrub gear and a small sprayer filled with tap water is helpful in removing small, hard-to-see invasive species, like the recently discovered New Zealand mudsnail. If you have recently been out of state or frequently fish between basins, consider using different gear or more thorough decontamination methods as you are at high risk of spreading invasive species.

To prevent the spread of aquatic invasive species, all water users are required by law to:

- **INSPECT** your boots, waders, nets, and other equipment.
- **REMOVE** any attached aquatic plants or animals (Before moving to a new waterbody)
- **DRAIN** all water from boats, motors and all equipment
- **NEVER MOVE** live fish away from a waterbody. Icing your catch is a great alternative.
- **DISPOSE** of unwanted bait in the trash.



# Trout Fishing Made Easy

New to trout fishing? Don't know where to go? Here are some trout fishing locations recommended by fisheries biologists for their ability to produce fish and their ease of access. Give them a try!



## Species



Coho - Coho salmon



Brn - brown trout



Brk - Brook trout



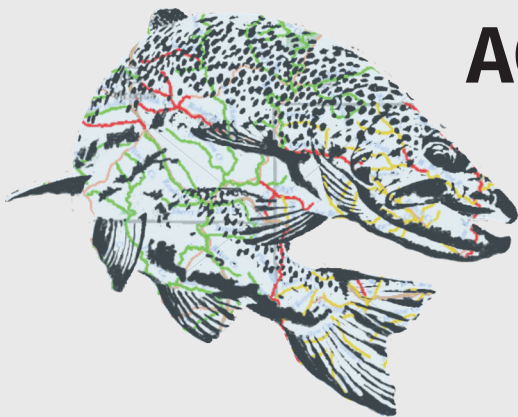
Rbow - rainbow trout

No	Water	County	Origin	Species	No	Water	County	Origin <sup>1</sup>	Species
1	Flag River	Bayfield	NR	Brn, Brk, Coho & Rbow	21	Pinnacle Rock Pond	Monroe	Stocked	Brk
2	Bois Brule River	Bayfield	NR	Brn, Brk, Coho & Rbow	22	Coon Creek	Vernon	NR/Stocked	Brn & Brk
3	South Fork White River	Bayfield	NR	Brn & Brk	23	Camp Creek	Richland	NR	Brn
4	Mimi Lake	Bayfield	Stocked	Brk	24	Mill Creek	Richland	NR	Brn
5	Devil's Creek	Ashland	NR	Brk	25	Willow Creek	Richland	NR	Brn
6	Hatchery Creek	Sawyer	NR	Brk	26	Ash Creek	Richland	NR	Brn & Brk
7	Stress Springs	Sawyer	NR	Brk	27	Honey Creek	Sauk	NR/Stocked	Brn
8	North Fok Clam River	Burnett	NR	Brn & Brk	28	Rowan Creek	Columbia	NR/Stocked	Brn & Rbo
9	Weber Lake	Iron	Stocked	Brk	29	Big Spring Branch	Grant	NR	Brn & Brk
10	Balsam Lake	Sawyer	Stocked	Rbow	30	Big Green River	Grant	NR	Brn
11	Turtle Creek	Barron		Brn & Brk	31	Castle Rock Creek	Grant	NR/Stocked	Brn & Rbow
12	Mirror Lake	Lincoln	Stocked	Brk & Rbow	32	Blue River	Grant	NR/Stocked	Brn & Rbow
13	North Branch Oconto River	Forest			33	Borah Creek	Grant	NR	Brn
14	East Branch Eau Claire River	Langlade	NR	Brk	34	Gordon Creek	Iowa	NR	Brn
15	Remington Pond	Langlade	NR/Stocked	Brn, Brk & Rbow	35	Black Earth Creek	Dane	NR/Stocked	Brn & Rbow
16	South Branch Oconto River	Oconto			36	Rosenow Creek	Waukesha	NR	Brk
17	North Branch Beaver Creek	Marinette			37	Paradise Springs	Waukesha	NR/Stocked	Brk
18	Waupaca River	Waupaca	Stocked	Brn & Rbow	38	Mukwonago River	Waukesha	Stocked	Brk
19	Mecan River	Waushara	NR	Brn & Brk	39	Sugar River Creek	Dane	NR	Brn
20	Veterans Memorial Park Pond	La Crosse	Stocked	Rbow	40	Spring Creek (Lodi)	Columbia	NR/Stocked	Brn & Rbow

<sup>1</sup>Origin: NR - population sustained through natural reproduction; NR/Stocked - Some natural reproduction, but stocking required to maintain a desirable fishery; Stocked - stocking required to provide a fishery

## Public Or Private? How Do I Know If I'm Trespassing?

- Navigability determines whether a waterway is public or private. Navigable lakes and streams are public waterways.
- A waterway is navigable if it has a bed and banks and it is possible to float a canoe or other small craft at sometime of the year—even if only during spring floods.
- Because they are public, you may use navigable waters for fishing, boating, swimming or other recreational activities, provided public access is available, or you have permission of the land owner to cross their property to reach the waterway. Once on a navigable waterway, AS LONG AS YOU KEEP YOUR FEET WET, YOU MAY WALK ALONG THE BED OF THE STREAM, FISH, SWIM OR BOAT IN ANY NAVIGABLE LAKE OR STREAM.



# ACCESS. ACCESS. ACCESS.

## Think T.R.O.U.T Trout Regulations & Opportunities User Tool

- On-the-go access to trout streams and regulations
- Roads, aerial images and fishing easements
- Finds your location (you are here!)
- Works on desktops, tablets and mobile devices

[dnr.wi.gov/topic/fishing/  
trout/trout.html](http://dnr.wi.gov/topic/fishing/trout/trout.html)

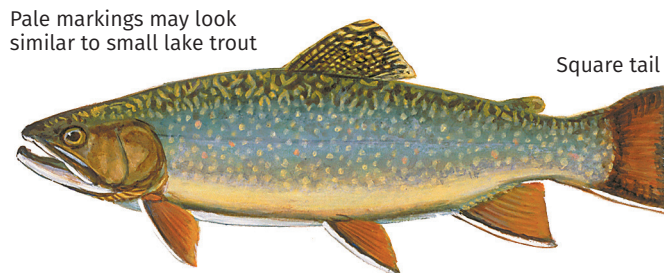
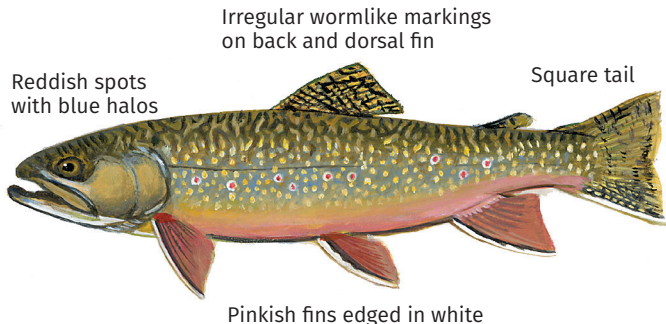


# IDENTIFYING WISCONSIN'S TROUT AND SALMON

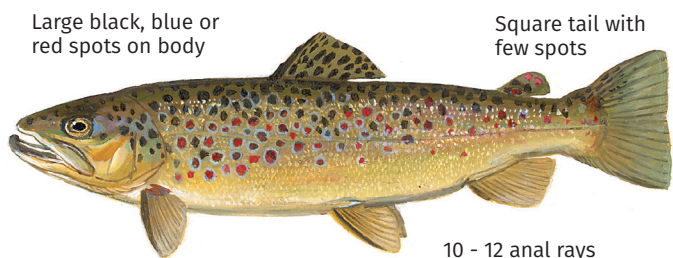
## Inland Trout

## Great Lakes Trout

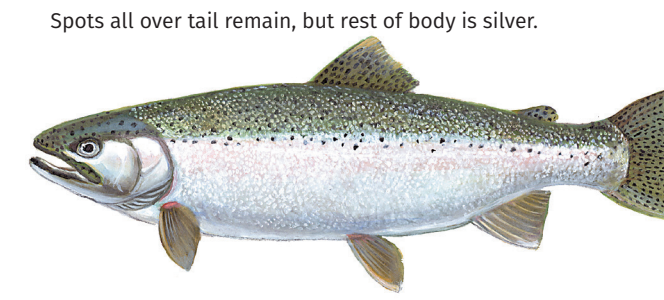
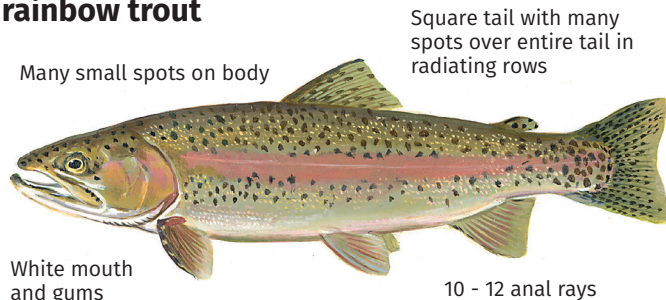
### Brook trout



### Brown trout

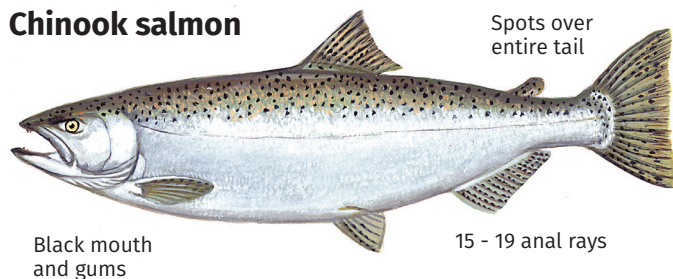


### rainbow trout

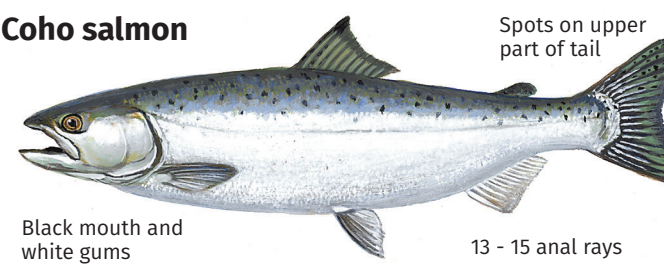


## Great Lakes Salmon and Lake trout

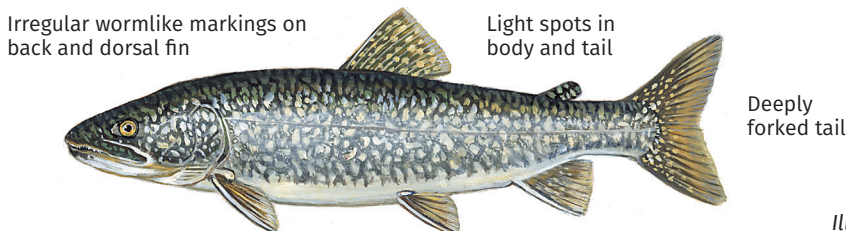
### Chinook salmon



### Coho salmon



### Lake trout



Illustrations by Virgil Beck

# FISHING WISCONSIN'S TROUT STREAMS

## Map Index

The maps in this booklet are a general guide to help you locate trout waters and they show approximate boundaries of all trout streams classified by the DNR. They do not include all unnamed streams or all spring ponds. For exact boundaries of regulations and open seasons, see the text of this pamphlet and observe signs posted on the waters.

For more information, please view the Wisconsin Trout Streams publication and detailed trout stream maps found at [dnr.wi.gov/topic/fishing/trout/streamclassification.html](http://dnr.wi.gov/topic/fishing/trout/streamclassification.html).

### TROUT REGULATIONS KEY

The numbered sections indicate the page number of the map inside. The legend shows the regulation categories that are shown on the maps inside. Each color means a different length and bag limit.

#### Regulation Category

Color	Minimum Length Limit	Daily Bag Limit
Green	None	5 in total
Yellow	8 inches	3 in total
Red	Special regulations: length and bag limits vary by specific water.	
Black line	Lake Michigan and Lake Superior tributaries	

